

SEW Eurodrive:
FAF77DRN90S4 1.1kW N=11min-1 230V/400V

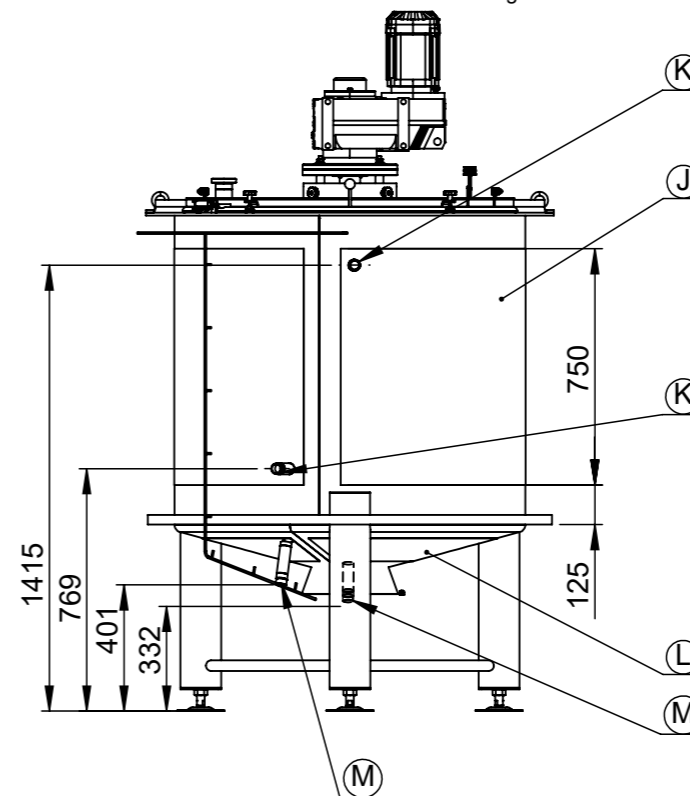
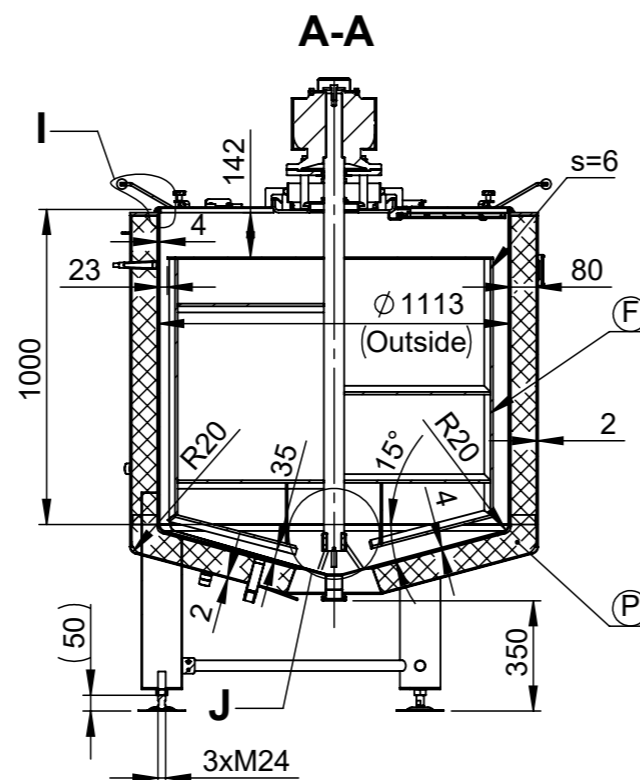
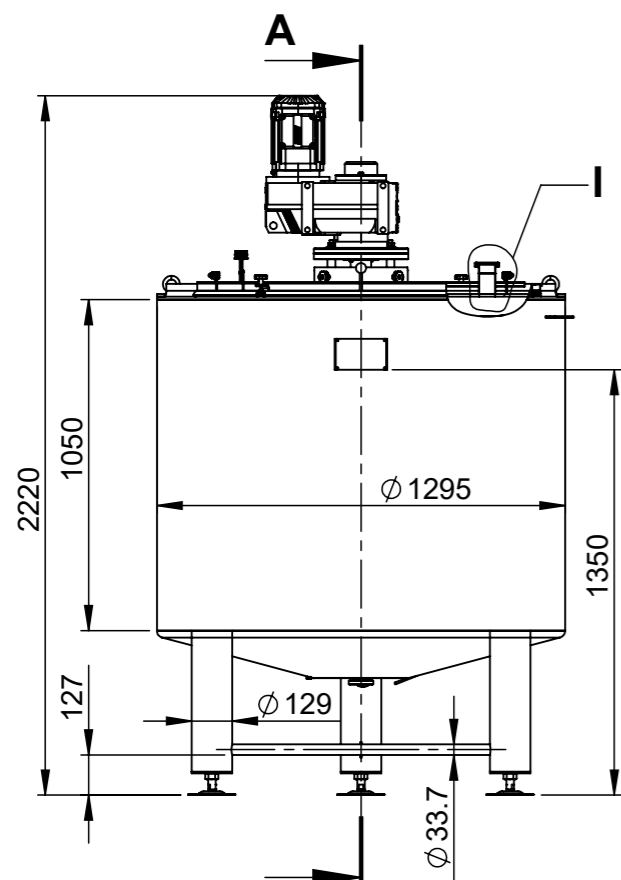


Behälter KG Bremen GmbH & Co.
Theodor-Barth-Str. 25
28307 Bremen - Germany
Tel. +49 (0) 421 34 85 114
E-Mail: mail@behaeltes-kg.de

Revisions

Rev	Description	Zone	Date	Drawn	Checked
A	Added a ball handle on the lids.		16.07.21	Z.Z.	M.P.

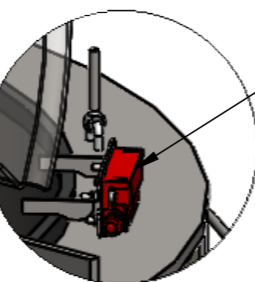
On this view the insulation and the cladding are hidden



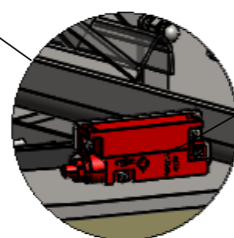
Q 1 : 3

A

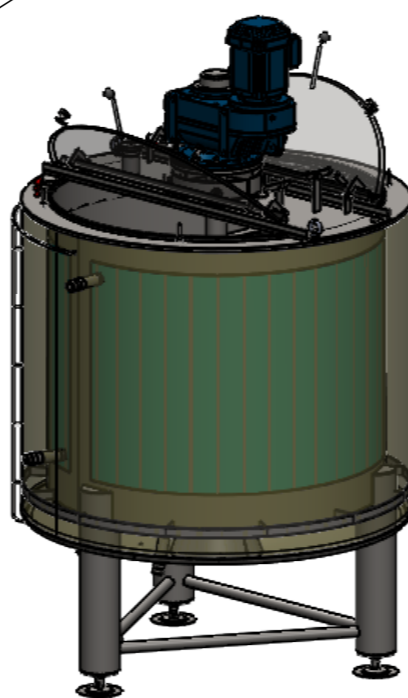
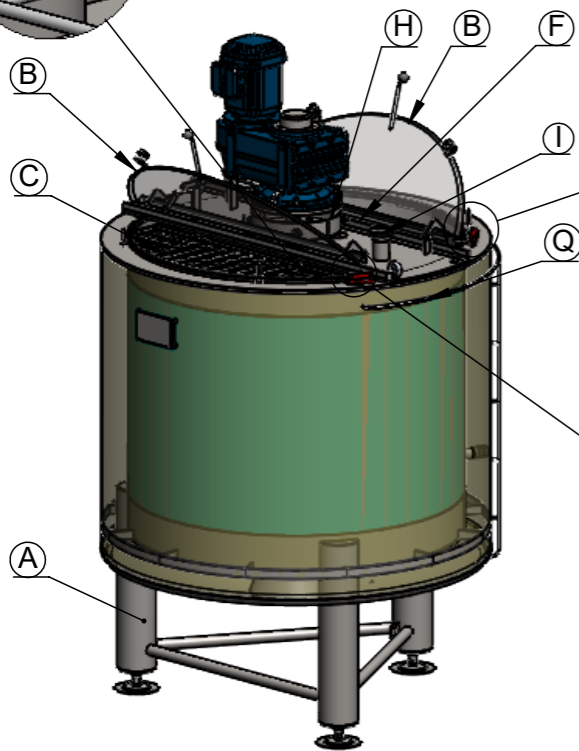
B 1 : 5



C 1 : 5



Self-locking
nut DIN 985



Поз. Item	Наименование Description	PN bar	DN mm.	Бр. Qty.
A	TUBULAR LEG ON ADJUSTABLE SUPPORT	-	-	3
B	1/2 HINGED LID 3mm- BRUSHED	atm.	-	2
C	SAFETY GRID 55X55/Φ5.0 ON 1/2 HINGED LID	atm.	-	1
D	SAFETY SWITCH ON 1/2 HINGED LID "ALLEN BRADLY" 440N-G02044	-	-	1
E	FRS 9 24V DC WITH 2.0m cables	-	-	1
F	SAFETY SWITCH ON SAFETY GRID "ALLEN BRADLY" 440N G02044 FRS	-	-	1
G	GATE AGITATOR WITHOUT SCRAPERS 1.1kW / 11min-1	-	-	1
H	BEAM FOR AGITATOR WITH 4pcs. LASER CUT LIFTING LUGS	-	-	1
I	SAFETY SHIELD FOR GEARED MOTOR	-	-	1
J	INLET UP TO WELDING MALE DN50 DIN 11851	atm.	50	1
K	HEATING LASER-WELDED DIMPLE JACKET ON TANK SHELL F=2.5m2 / H=750mm / Pmax 5bar / Tmax 150°C *medium hot water/steam	0/5	G 1"	1
L	INLET/OUTLET JACKET ON TANK SHELL UP TO WELDING MALE NIPPLE G1"	0/5	G 1"	2
M	HEATING LASER-WELDED DIMPLE JACKET ON TANK BOTTOM F=0.6m2 / Pmax 5bar / Tmax 150°C *medium hot water/steam	0/5	G 1"	1
N	INLET/OUTLET JACKET ON TANK BOTTOM UP TO WELDING MALE NIPPLE G1"	0/5	G 1"	2
O	INLET G 1/2" FOR THERMOPROBE	atm.	G 1/2"	1
P	PRODUCT OUTLET UP TO WELDING MALE DN50 DIN11851	atm.	50	1
Q	INSULATION MINERAL WOOL 80mm ON THE BOTTOM AND TANK SHELL WITH WELDED CLADDING MAT. 1.4307 (AISI 304L); 2J(BRUSHED)	-	-	1
	STAINLESS STEEL SUPPORT CONSTRUCTION FOR CABLES - AISI304 - ROUND BAR Φ6	-	-	1

Straightness, flatness and parallelism - EN 13920 F

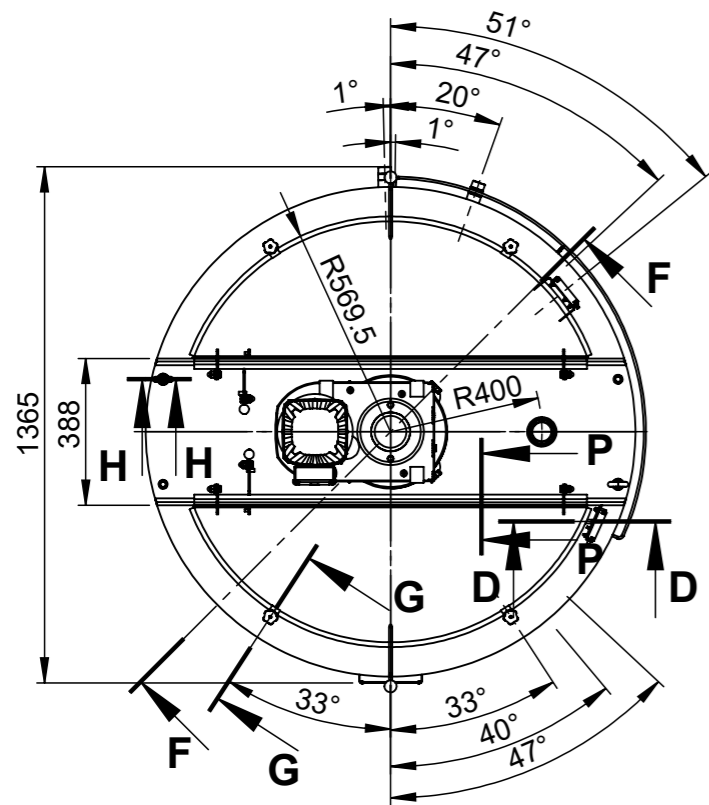
Linear dimensions - EN 13920 B

Surface	Outside	Brushed 2J	Weld. seams	Outside	Strip grinded 2x20 Ra<1,6
	Inside	Matt 2B		Inside	Flat grinded to Ra<0,8

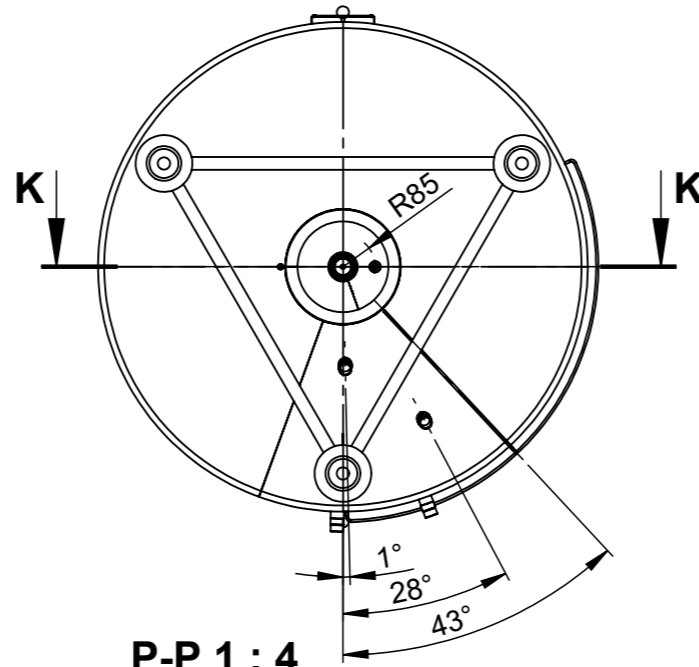
1.6	Drawn: Z.Z.	Scale 1:24	1.4307/ AISI 304L	12117102 WVG8254V4N ID19.581-ID19.582
-----	----------------	---------------	----------------------	---

Checked: M.P.	TANK TYPE CHC-H12ILA-1010L			
------------------	-----------------------------------	--	--	--

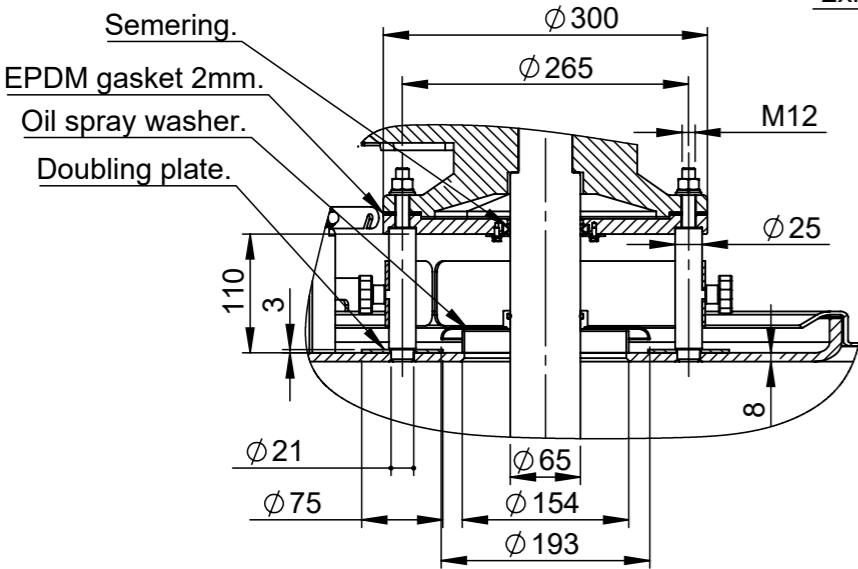
Approved: D.M.	Rev	16.7.2021 г.	Lang Eng	Sheet 1/2
-------------------	-----	--------------	-------------	--------------



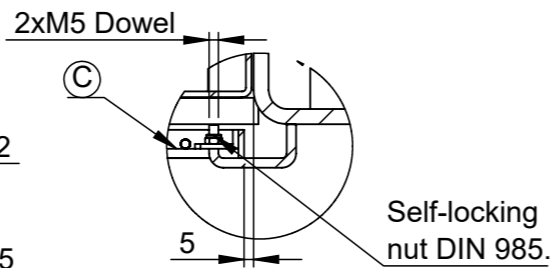
F-F 1 : 7



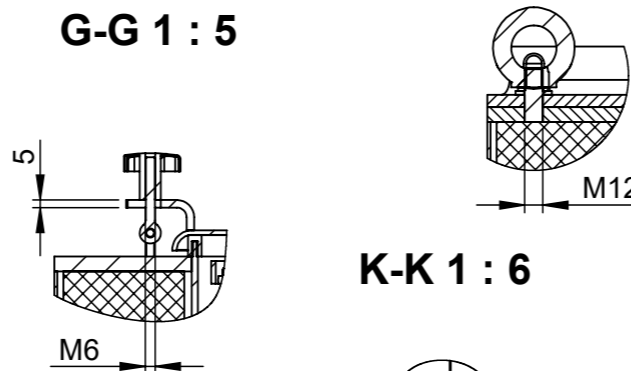
P-P 1 : 4



J 1 : 7

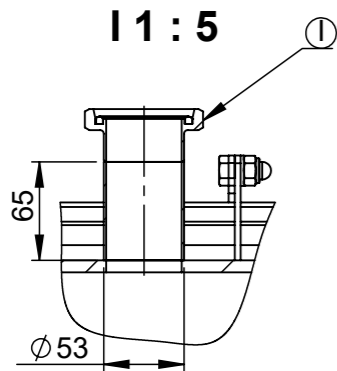


H-H 1 : 5

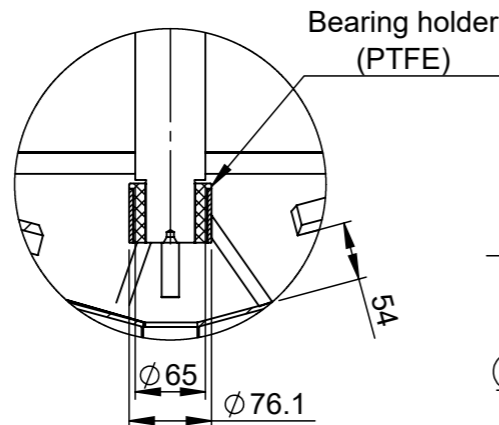


G-G 1 : 5

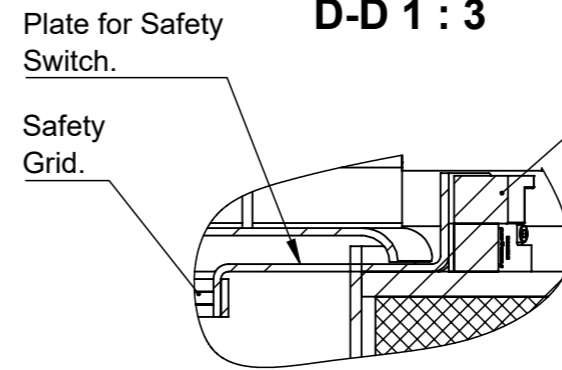
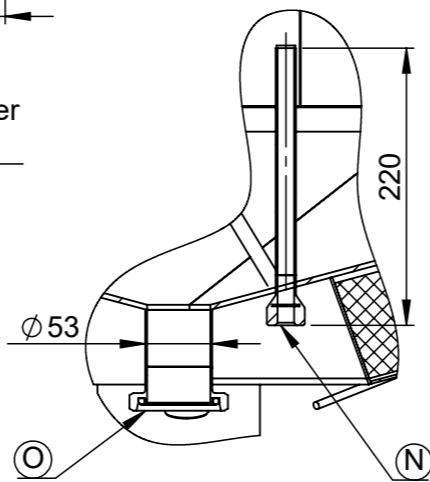
K-K 1 : 6



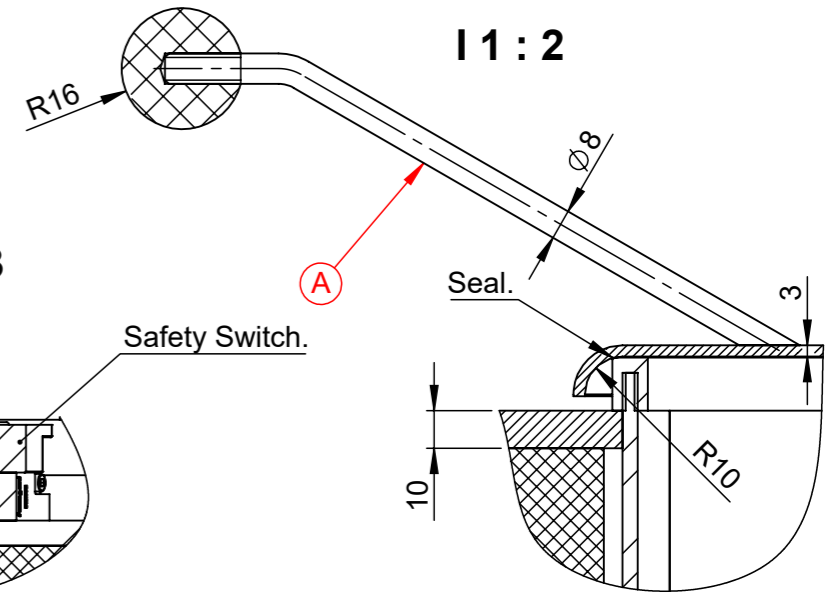
I 1 : 5



Bearing holder (PTFE)



D-D 1 : 3



I 1 : 2

TANK TYPE CHC-H12ILA-1010L			
Serial number	12117102-01	Stock nr.	WWG8254V4N / ID19.581
Geometrical volume	1010 l	Geometrical volume - jacket	5.6 l
Working pressure	Atmospheric	Working pressure - jacket	0/5 bar
Working temperature	-10/100°C	Working temperature - jacket	-10/150°C
Maximum density	1.2kg/dm³	Jacket pressure drop	-
Tare mass	665 kg	Material	1.4307/ AISI 304L
Equipment output/voltage	1.1 kW/400V	Year of manufacture	2021

TANK TYPE CHC-H12ILA-1010L			
Serial number	12117102-02	Stock nr.	WWG8254V4N / ID19.582
Geometrical volume	1010 l	Geometrical volume - jacket	5.6 l
Working pressure	Atmospheric	Working pressure - jacket	0/5 bar
Working temperature	-10/100°C	Working temperature - jacket	-10/150°C
Maximum density	1.2kg/dm³	Jacket pressure drop	-
Tare mass	665 kg	Material	1.4307/ AISI 304L
Equipment output/voltage	1.1 kW/400V	Year of manufacture	2021

Straightness, flatness and parallelism - EN 13920 F			Linear dimensions - EN 13920 B		
Surface	Outside	Brushed 2J	Weld. seams	Outside	Strip grinded 2x20 Ra<1,6
	Inside	Matt 2B		Inside	Flat grinded to Ra<0,8
1.6	✓/✓/✓	Drawn: Z.Z.	Scale 1:24	12117102 WWG8254V4N ID19.581-ID19.582	
✓/✓/✓	+	Checked: M.P.	TANK TYPE CHC-H12ILA-1010L		
✓/✓/✓	+	Approved: D.M.			
BEHÄLTER KG BREMEN Behälter KG Bremen GmbH & Co. Theodor-Barth-Str. 25 28307 Bremen - Germany Tel: +49 (0)421 34 95 114 E-Mail: mail@behaelter-kg.de			Rev	16.7.2021 r.	Lang Eng Sheet 2/2