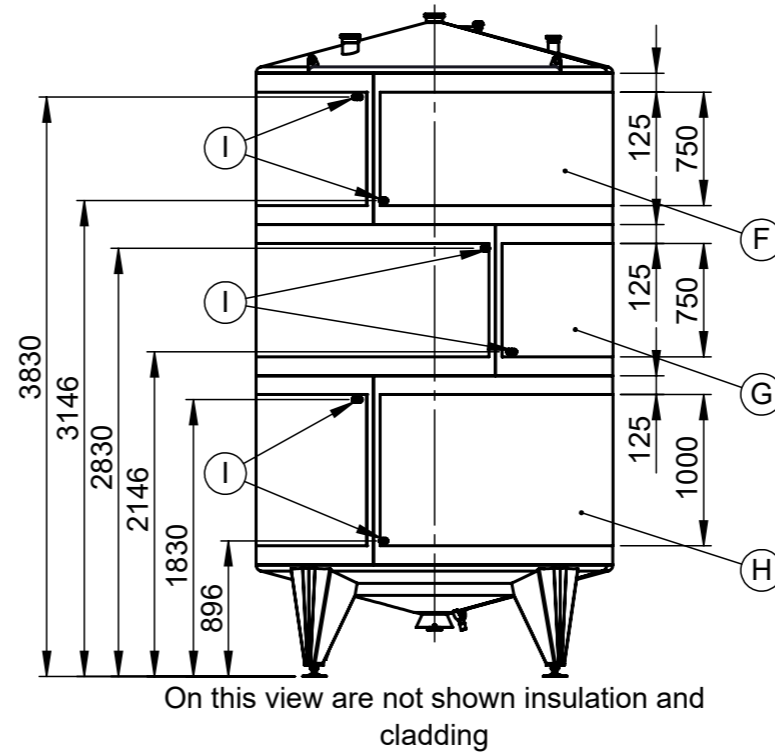
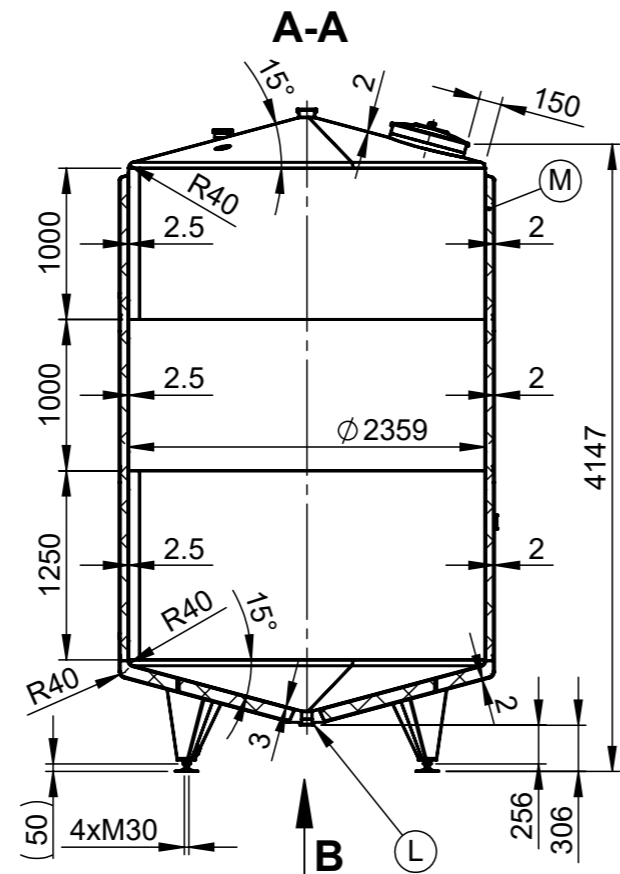
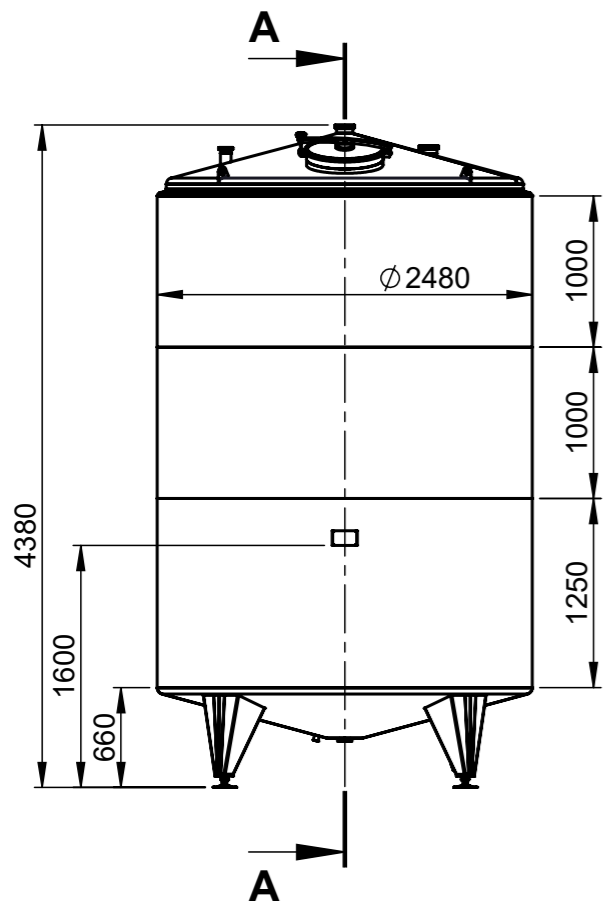
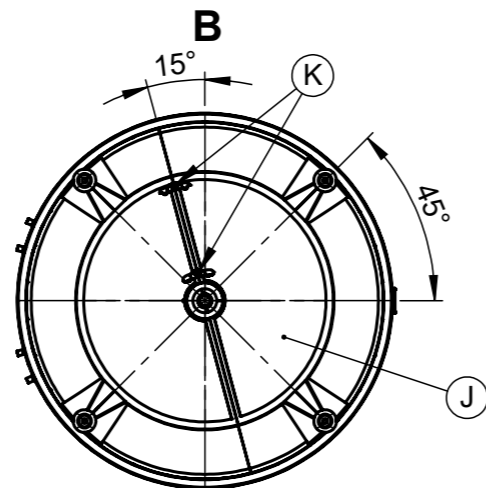
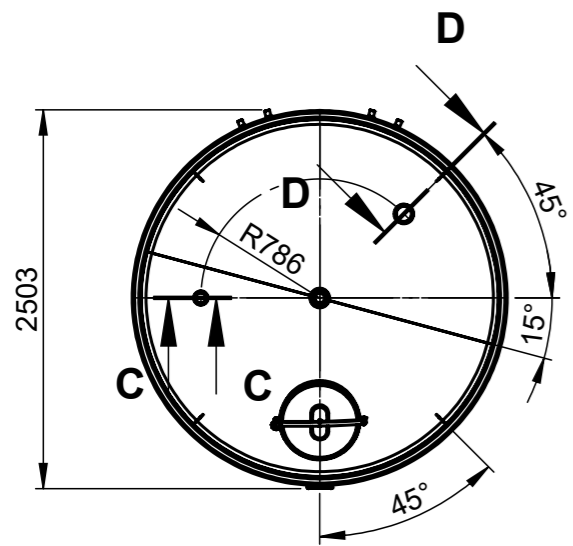
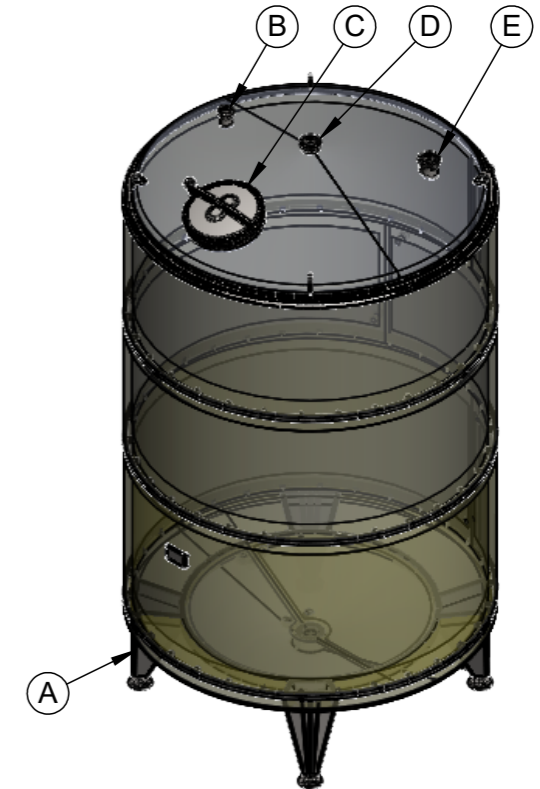


Rev	Description	Zone	Date	Drawn	Checked



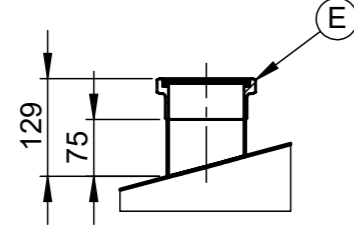
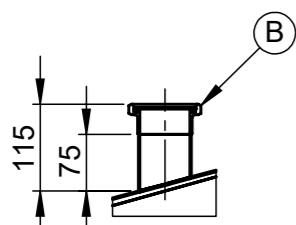
On this view are not shown insulation and cladding



On this view are not shown insulation and cladding on the bottom

C-C 1 : 10

D-D 1 : 10



TYPE K3-H12W.IL	
Serial number	119 903 18
Geometrical volume	15300 €
Working pressure	Atmospheric
Working temperature	-10/100°C
Maximum density	1.2kg/dm³
Tare mass	1497 kg
Equipment output/voltage	-
Stock nr.	WWG11.500V6LN
Geometrical volume - jacket	35 €
Working pressure - jacket	0/3 bar
Working temperature - jacket	-10/110°C
Jacket pressure drop	-
Material	1.4404 / AISI 316L
Year of manufacture	-

Item	Description	PN bar	DN mm.	Qty.
A	LEG ON ADJUSTABLE SUPPORT	-	-	4
B	INLET DN65 ON TANK TOP UP TO WELDING MALE DN65 DIN11851	atm.	65	1
C	UPPER MANHOLE DN500 Elica art.50/1p-6 EPDM-FDA GASKET	atm.	500	1
D	INLET DN100 CENTRICALLY MOUNTED ON TANK TOP UP TO WELDING MALE DN100 DIN11851	atm.	100	1
E	INLET DN100 FOR AIRVENT ON TANK TOP UP TO WELDING MALE DN100 DIN11851	atm.	100	1
F	UPPER LASER-WELDED DIMPLE JACKET ON TANK SHELL H=750mm / F=5.4m² *heating agent hot water at Pmax=3bar and Tmax=110°C	3	-	1
G	MIDDLE LASER-WELDED DIMPLE JACKET ON TANK SHELL H=750mm / F=5.4m² *heating agent hot water at Pmax=3bar and Tmax=110°C	3	-	1
H	LOWER LASER-WELDED DIMPLE JACKET ON TANK SHELL H=1000mm / F=7.3m² *heating agent hot water at Pmax=3bar and Tmax=110°C	3	-	1
I	INLET/OUTLET DIMPLE JACKET ON TANK SHELL UP TO WELDING MALE G1"	3	G1"	6
J	LASER-WELDED DIMPLE JACKET ON TANK BOTTOM F=1.94m² *heating agent hot water at Pmax=3bar and Tmax=110°C	3	-	1
K	INLET/OUTLET DIMPLE JACKET ON TANK BOTTOM UP TO WELDING MALE G1"	3	G1"	2
L	TOTAL OUTLET DN65 UP TO WELDING MALE DN65 DIN11851	atm.	65	1
M	INSULATION MINERAL WOOL 50mm ON TANK SHELL AND 80mm ON BOTTOM WITH STAINLESS STEEL AISI304L WELDED CLADDING s=2mm	-	-	1

Straightness, flatness and parallelism - EN 13920 F								Linear dimensions - EN 13920 B							
≥30	>120	>400	>1000	>2000	>4000	>8000	>12000	≥2	>30	>400	>1000	>2000	>4000	>8000	>12000
≤120	≤400	≤1000	≤2000	≤4000	≤8000	≤12000	≤16000	≤30	≤400	≤1000	≤2000	≤4000	≤8000	≤12000	≤16000
1	1.5	3	4.5	6	8	10	12	±1	±2	±3	±4	±6	±8	±10	±12
Surface	Outside				Matt 2B				Weld. seams	Outside				Strip grinded 2x20 Ra<1,6	
	Inside				Matt 2B					Inside				Flat grinded to Ra<0,8	
1.6		✓		✓		✓		Drawn:	Scale		1.4404/ AISI 316L		119 903 18 WWG11.500V6LN		
✓		✓		✓		✓		Checked:	TYPE K-H12W.IL-15300L		Rev		20.9.2019 r.		
✓		✓		✓		✓		Approved:	Lang		Eng		Sheet		
✓		✓		✓		✓		D.M.		1/2					