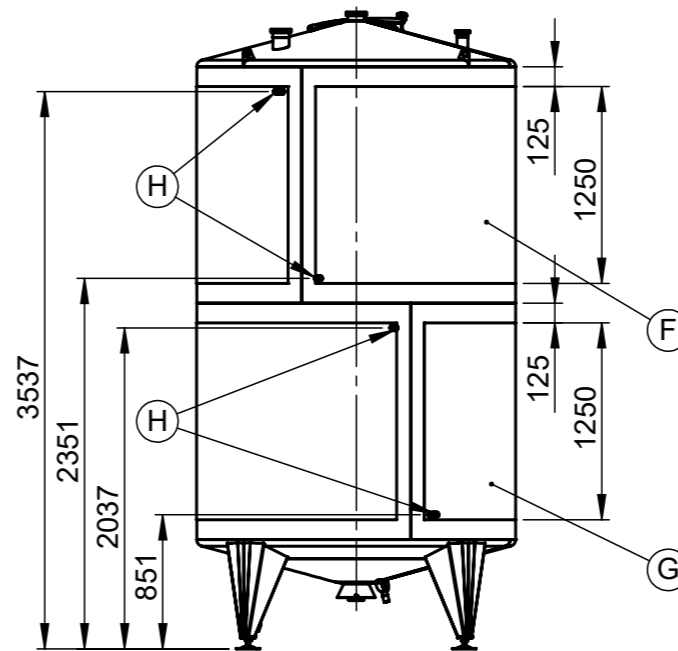
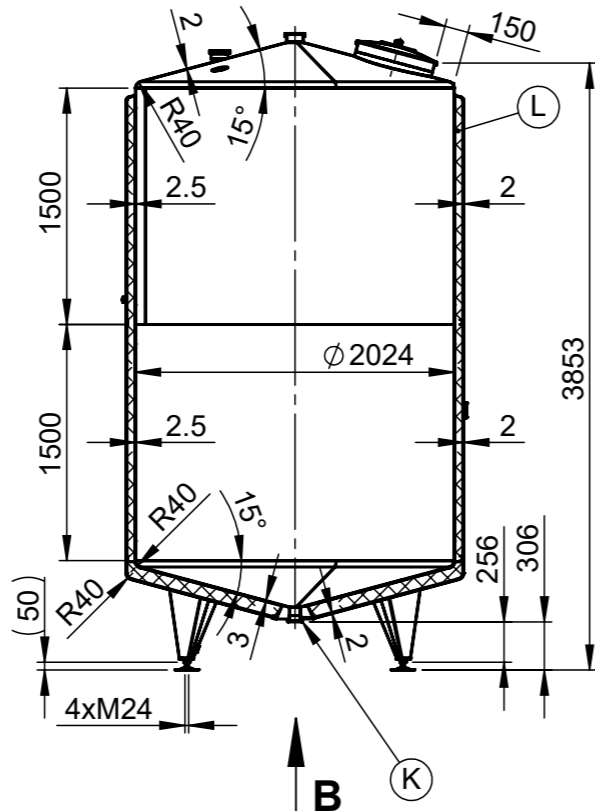
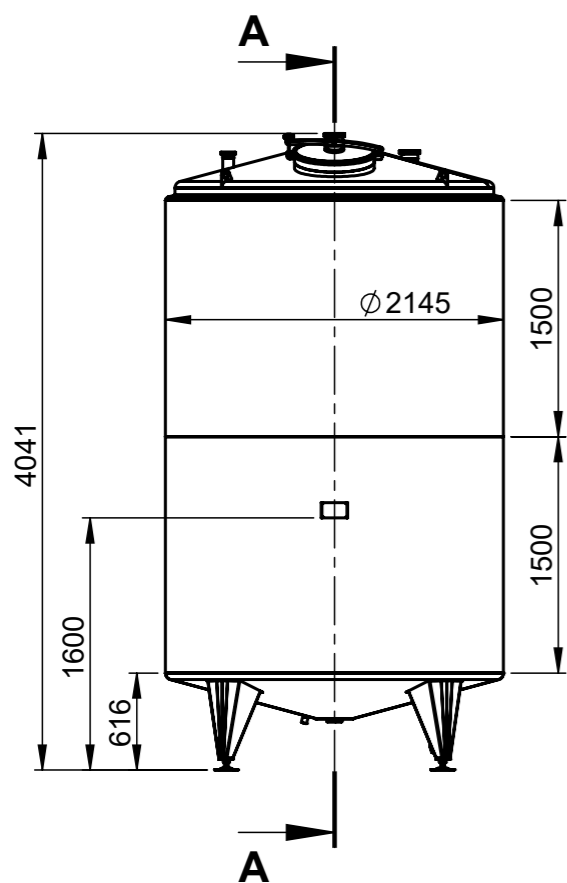




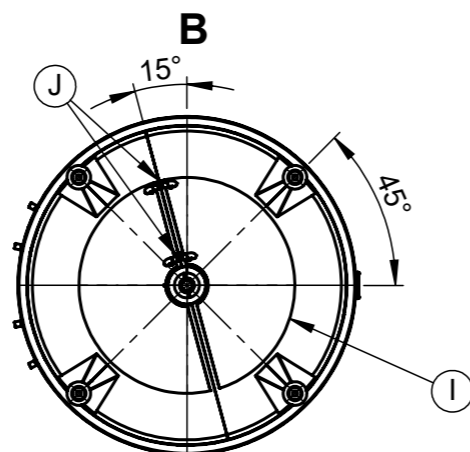
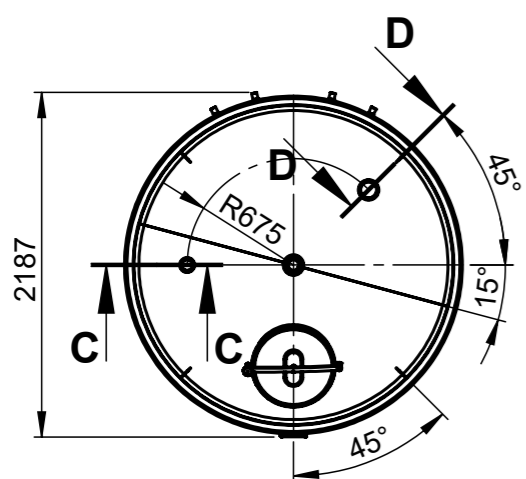
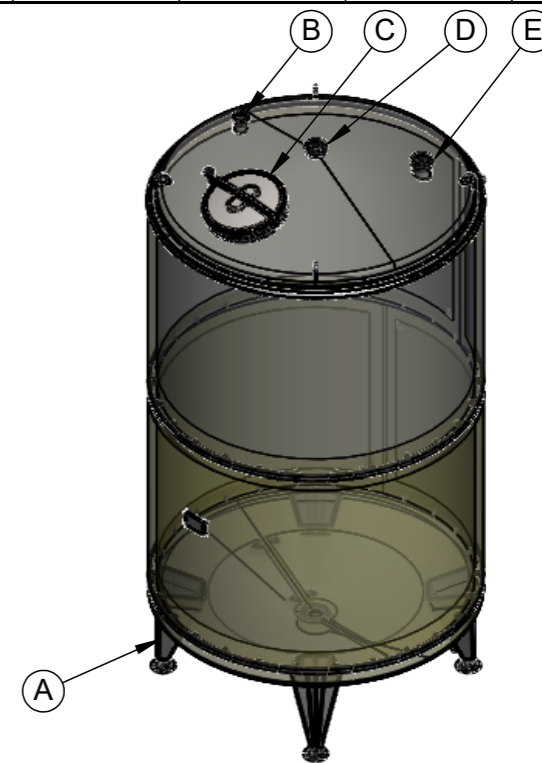
Behalter KG Bremen GmbH & Co.
Theodor-Barth-Str. 25
28307 Bremen – Germany
Tel.: +49 421 34 85 10
Mail: mail@behalter.kg.de

Revisions

Rev	Description	Zone	Date	Drawn	Checked

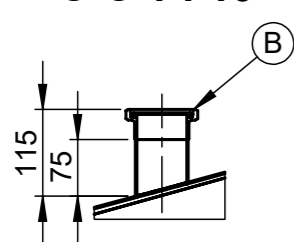


On this view are not shown insulation and cladding

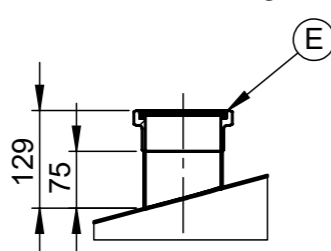


On this view are not shown insulation and cladding on the bottom

C-C 1 : 10



D-D 1 : 10



TYPE K3-H12W.IL	
Serial number	119 903 16
Geometrical volume	10300 l
Working pressure	Atmospheric
Working temperature	-10/100°C
Maximum density	1.2kg/dm³
Tare mass	1159 kg
Equipment output/voltage	-
Stock nr.	WWG11.498V6LN
Geometrical volume - jacket	30 l
Working pressure - jacket	0/3 bar
Working temperature - jacket	-10/110°C
Jacket pressure drop	-
Material	1.4404/ AISI 316L
Year of manufacture	-

Item	Description	PN	DN	Qty.
		bar	mm.	
A	LEG ON ADJUSTABLE SUPPORT	-	-	4
B	INLET DN65 ON TANK TOP UP TO WELDING MALE DN65 DIN11851	atm.	65	1
C	UPPER MANHOLE DN500 Elica art.50/1p-6 EPDM-FDA GASKET	atm.	500	1
D	INLET DN100 CENTRICALLY MOUNTED ON TANK TOP UP TO WELDING MALE DN100 DIN11851	atm.	100	1
E	INLET DN100 FOR AIRVENT ON TANK TOP UP TO WELDING MALE DN100 DIN11851	atm.	100	1
F	UPPER LASER-WELDED DIMPLE JACKET ON TANK SHELL H=1250mm / F=7.7m2 *heating agent hot water at Pmax=3bar and Tmax=110°C	3	-	1
G	LOWER LASER-WELDED DIMPLE JACKET ON TANK SHELL H=1250mm / F=7.7m2 *heating agent hot water at Pmax=3bar and Tmax=110°C	3	-	1
H	INLET/OUTLET DIMPLE JACKET ON TANK SHELL UP TO WELDING MALE G1"	3	G1"	4
I	LASER-WELDED DIMPLE JACKET ON TANK BOTTOM F=1.3m2 *heating agent hot water at Pmax=3bar and Tmax=110°C	3	-	1
J	INLET/OUTLET DIMPLE JACKET ON TANK BOTTOM UP TO WELDING MALE G1"	3	G1"	2
K	TOTAL OUTLET DN65 UP TO WELDING MALE DN65 DIN11851	atm.	65	1
L	INSULATION MINERAL WOOL 50mm ON TANK SHELL AND 80mm ON BOTTOM WITH STAINLESS STEEL AISI304L WELDED CLADDING s=2mm	-	-	1

Straightness, flatness and parallelism - EN 13920 F								Linear dimensions - EN 13920 B									
≥30	>120	>400	>1000	>2000	>4000	>8000	>12000	≥2	>30	>400	>1000	>2000	>4000	>8000	>12000		
≤120	≤400	≤1000	≤2000	≤4000	≤8000	≤12000	≤16000	≤30	≤400	≤1000	≤2000	≤4000	≤8000	≤12000	≤16000		
1	1.5	3	4.5	6	8	10	12	±1	±2	±3	±4	±6	±8	±10	±12		
Surface	Outside				Matt 2B				Weld. seams	Outside				Strip grinded 2x20 Ra<1,6			
	Inside				Matt 2B					Inside				Flat grinded to Ra<0,8			
1.6		✓/✓		Drawn:		Scale		1.4404/ AISI 316L		119 903 16		WWG11.498V6LN					
✓/✓		✓/✓		Z.Z.		1:48		S11498		TYPE K3-H12W.IL-10300L							
✓/✓		✓/✓		Checked:		S11498		TYPE K3-H12W.IL-10300L		Rev		20.9.2019 r.		Lang Eng		Sheet 1/1	
✓/✓		✓/✓		K.I.		S11498		TYPE K3-H12W.IL-10300L		Approved:		D.M.					