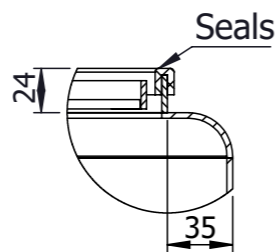
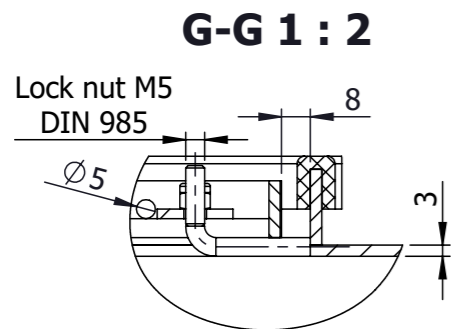
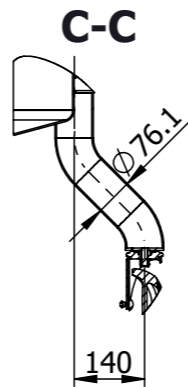


E 1 : 4



Schnellmischer:
 1.RW9532V6N 0,25kW 1500rpm 400V
 2.RW9533V6N 0,12kW 680rpm 400V

Revisions

Rev	Description	Date	Drawn	Checked	Rev. DD

TYPE: VC-HICA	
Serial number	118 072 02 01
Geometrical volume	150 €
Working pressure	Atmospheric
Working temperature	-10/100°C
Maximum density	1.2kg/dm³
Tare mass	85 kg
Equipment output/voltage	-
Stock nr.	WWG11005V6LN/ID15.943
Geometrical volume - jacket	5 €
Working pressure - jacket	0/3 bar
Working temperature - jacket	-10/100°C
Jacket pressure drop	0.17 bar
Material	1.4404 / AISI 316L
Year of manufacture	2018

Item	Description	PN	DN	Qty.
		bar	mm.	
A	TUBULAR LEG ON WHEEL WITHOUT BREAK	-	-	2
B	TUBULAR LEG ON WHEEL WITH BREAK	-	-	2
C	1/2 FIXED LID	atm.	-	1
D	1/2 HINGED LID	atm.	-	1
E	SAFETY GRID FOR 1/2 HINGED LID	-	-	1
F	TIGHTNER FOR HINGED LID	-	-	2
G	CONICAL INLET FOR AGITATOR UP TO FLANGE; Ø 220mm; s20 -agitator and mounting of the agitator are not included	atm.	100	1
H	INLET DN50 UP TO WELDING MALE DN50 DIN11851	atm.	50	1
I	HOLDER FOR PUSHING THE TANK	-	-	1
J	DIMPLE JACKET ON TANK SHELL H=375mm F=0.7m² / Pmax=3bar / Tmax=100°C, INLET/OUTLET JACKET UP TO WELDING MALE NIPPLE G1"	3	G1"	1
K	INSULATION MINERAL WOOL 40mm WITH DECORATIVE CASING FOR DIMPLE JACKET ON TANK SHELL	-	-	1
L	DISMOUNTABLE TOTAL OUTLET UP TO WELDING LINER AND NUT DIN 11851	atm.	40	1

Straightness, flatness and parallelism - EN 13920 F								Linear dimensions - EN 13920 B							
≥30	>120	>400	>1000	>2000	>4000	>8000	>12000	≥2	>30	>400	>1000	>2000	>4000	>8000	>12000
≤120	≤400	≤1000	≤2000	≤4000	≤8000	≤12000	≤16000	≤30	≤400	≤1000	≤2000	≤4000	≤8000	≤12000	≤16000
1	1.5	3	4.5	6	8	10	12	±1	±2	±3	±4	±6	±8	±10	±12
Surface	Outside		Матови 2B		Weld. seams		Outside		Strip grinded to Ra<1.6						
	Inside		Матови 2B				Inside		Flat grinded to Ra<0.8						

1.6	Drawn: I.N.	Scale 1:15	Weight 91.3	1.4404/ AISI 316L	118 072 02 WWG11005V6LN/ID15.943
	Checked: K.I.	TYPE VC-HICA V=150 L			
	Approved: D.M.	Rev	29.1.2018	Lang Eng	Sheet 1/1