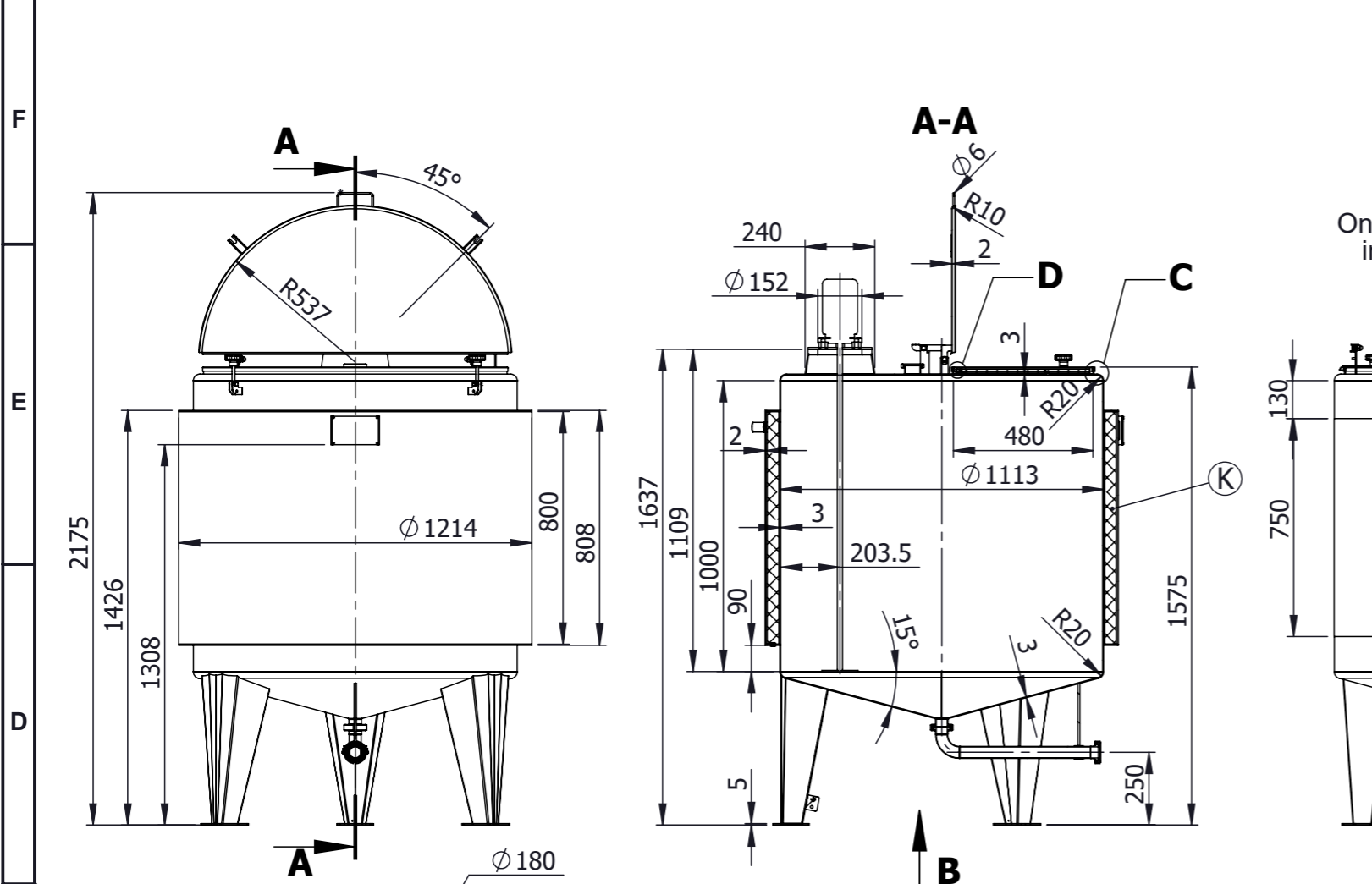
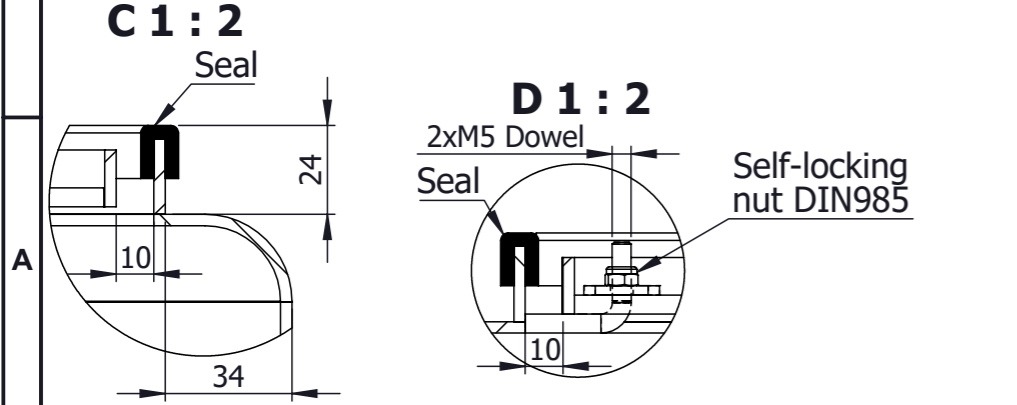
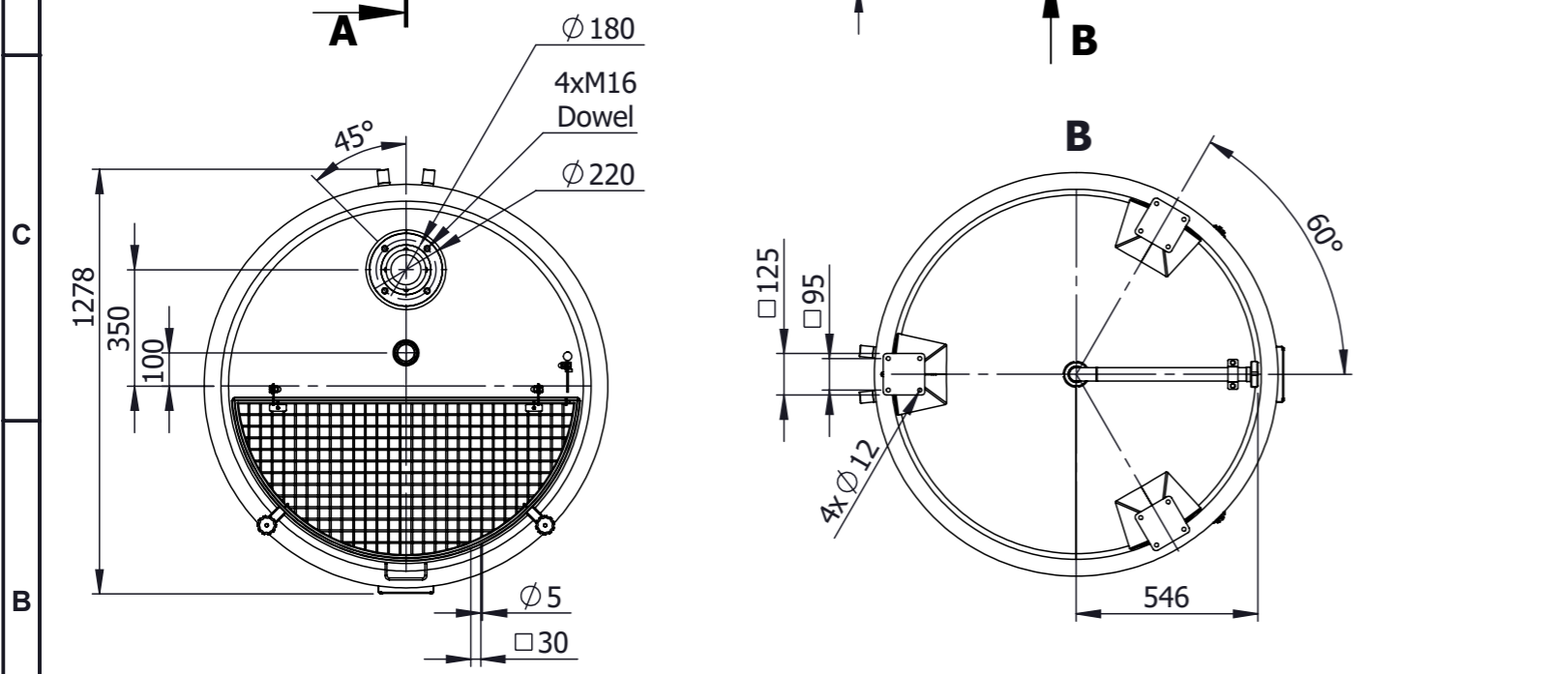
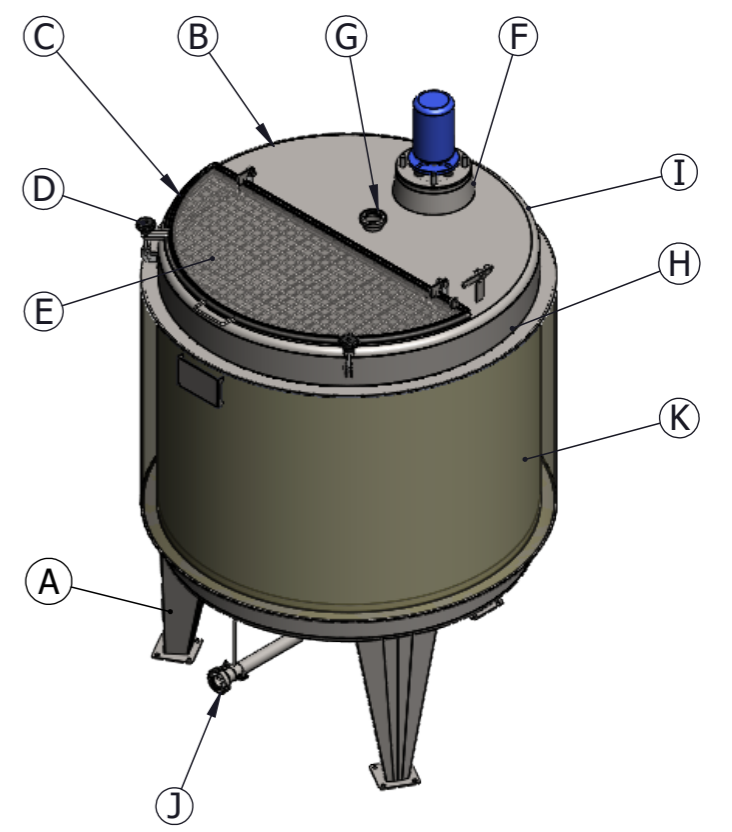
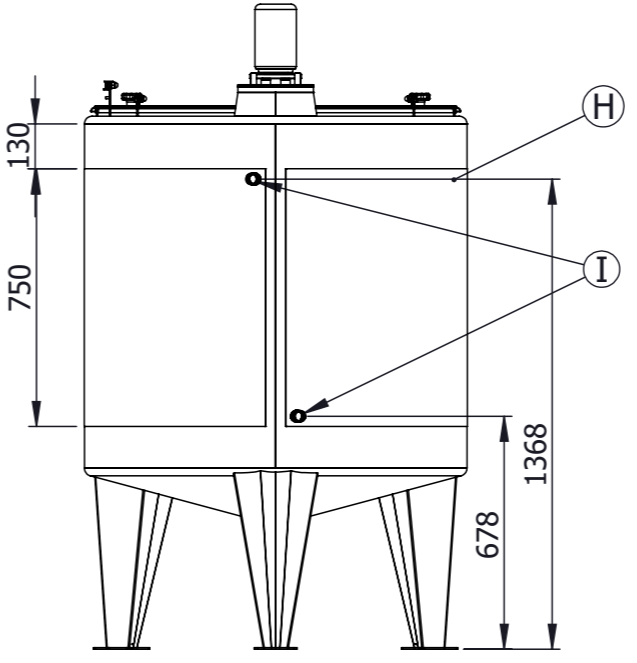


Revisions					
Rev	Description	Zone	Date	Drawn	Checked



On this view are not shown insulation and cladding



Serial number		Stock nr.	
117 910 08	WWG11004V6LN	Geometrical volume	Geometrical volume - jacket
1000 €	4.6 €	Working pressure	Working pressure - jacket
Atmospheric	8bar	Working temperature	Working temperature - jacket
-10/100°C	-10/100°C	Maximum density	Jacket pressure drop
1.2kg/dm <sup>3</sup>	-	Tare mass	Material
242 kg	1.4404 / AISI 316L	Equipment output/voltage	Year of manufacture
-	-	-	-

Item	Description	PN bar	DN mm.	Qty.
A	LEG ON ANCHOR PLATE	-	-	3
B	1/2 FIXED LID s=3mm	-	-	1
C	1/2 HINGED LID s=2mm	-	-	1
D	TIGHTNER FOR HINGED LID	-	-	2
E	SAFETY GRID FOR 1/2 HINGED LID	-	-	1
F	CONICAL INLET FOR AGITATOR UP TO FLANGE $\phi 220$ mm	-	150	1
G	INLET DN50 UP TO WELDING MALE DN50 DIN11851	atm.	50	1
H	LASER-WELDED DIMPLE JACKET ON TANK SHELL H=750mm / F=2.5m <sup>2</sup> / Pmax 8bar / Tmax=100°C *heating agent hot water	8	-	1
I	INLET/OUTLET DIMPLE JACKET ON TANK SHELL UP TO WELDING MALE G1"	8	G1"	2
J	DISMOUNTABLE TOTAL OUTLET UP TO WELDING LINER AND NUT DN40 DIN11851	atm.	40	1
K	INSULATION MINERAL WOOL 40mm ON TANK SHELL WITH STAINLESS STEEL (AISI304L) WELDED DECORATIVE CASING FOR THE DIMPLE JACKET	-	-	1

Straightness, flatness and parallelism - EN 13920 F								Linear dimensions - EN 13920 B							
≥30	>120	>400	>1000	>2000	>4000	>8000	>12000	≥2	>30	>400	>1000	>2000	>4000	>8000	>12000
≤120	≤400	≤1000	≤2000	≤4000	≤8000	≤12000	≤16000	≤30	≤400	≤1000	≤2000	≤4000	≤8000	≤12000	≤16000
1	1.5	3	4.5	6	8	10	12	±1	±2	±3	±4	±6	±8	±10	±12

Surface	Outside	Inside	Weld. seams	Outside	Inside
1.6	Outside	Inside	Weld. seams	Strip grinded 2x20 Ra<1,6	Flat grinded to Ra<0,8
1.6	Matt 2B	Matt 2B	1.4404	117 910 08	117 910 08
1.6	Matt 2B	Matt 2B	AISI 316L	WWG11004V6LN	WWG11004V6LN
<b>TYPE VC-HILA-1000 L</b>					
Drawn:	Z.Z.	Scale	1:22	Rev	30.7.2019 r.
Checked:	K.I.	Lang	Eng	Sheet	1/1
Approved:	D.M.				