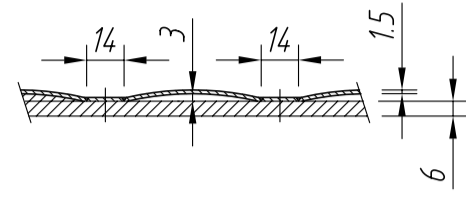
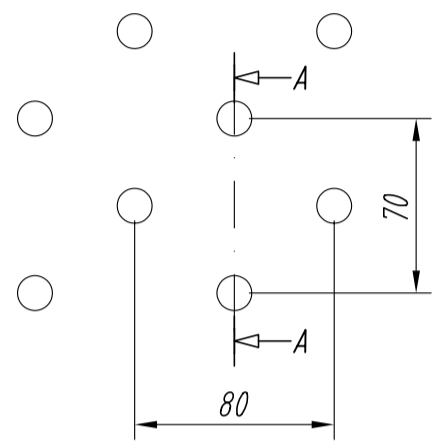


Reference document list

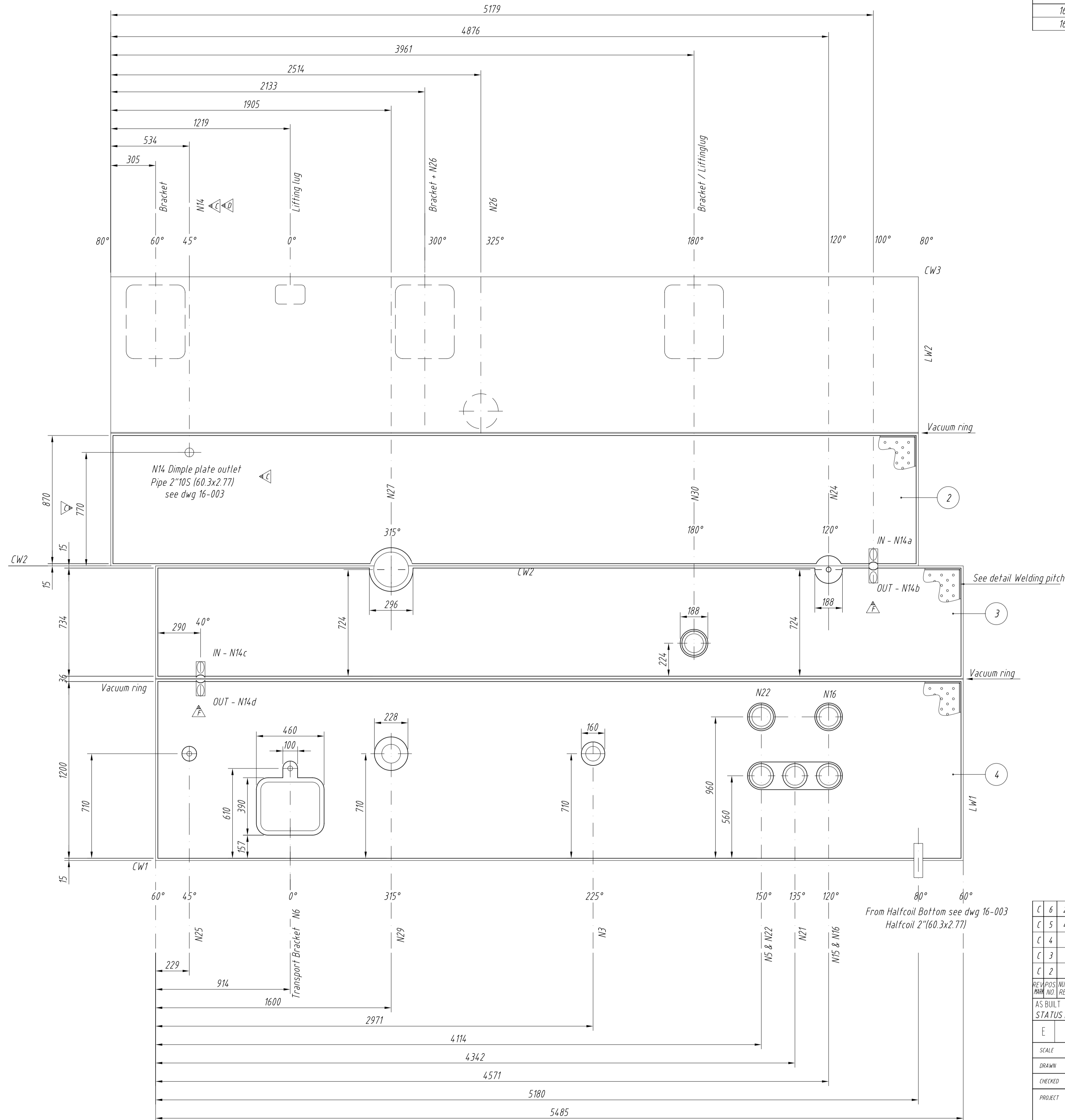
Document no.	Document name	Client document no.
16-975	Welding Document Dimple Plates	-
16-976	Strength Calculation Dimple Plates	-



SECTION A-A

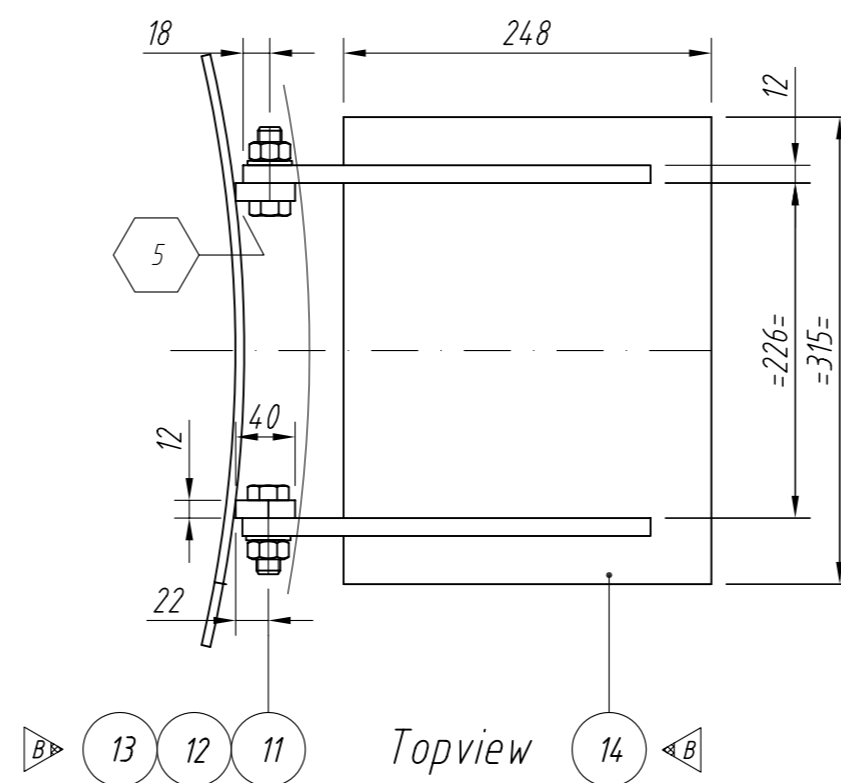
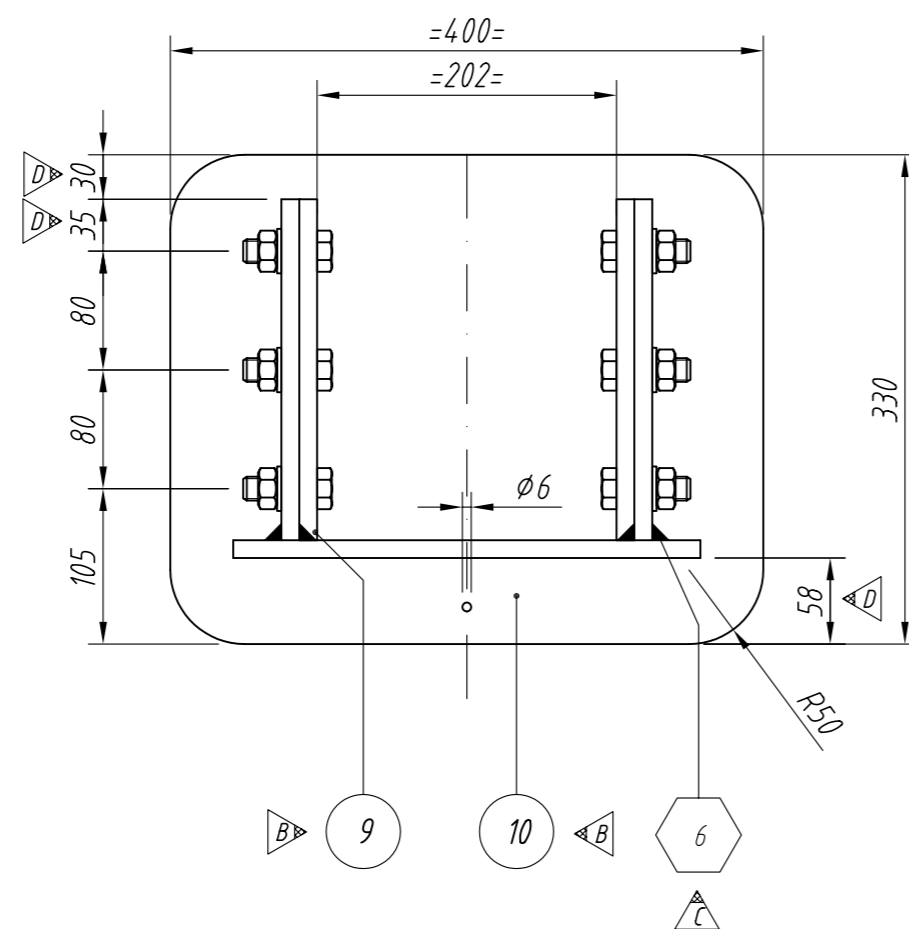
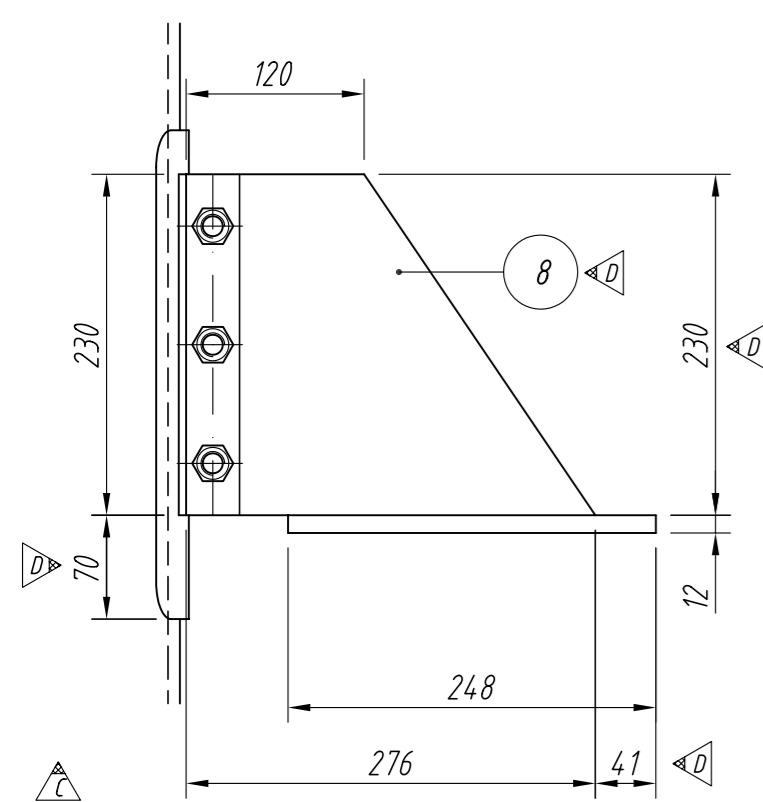
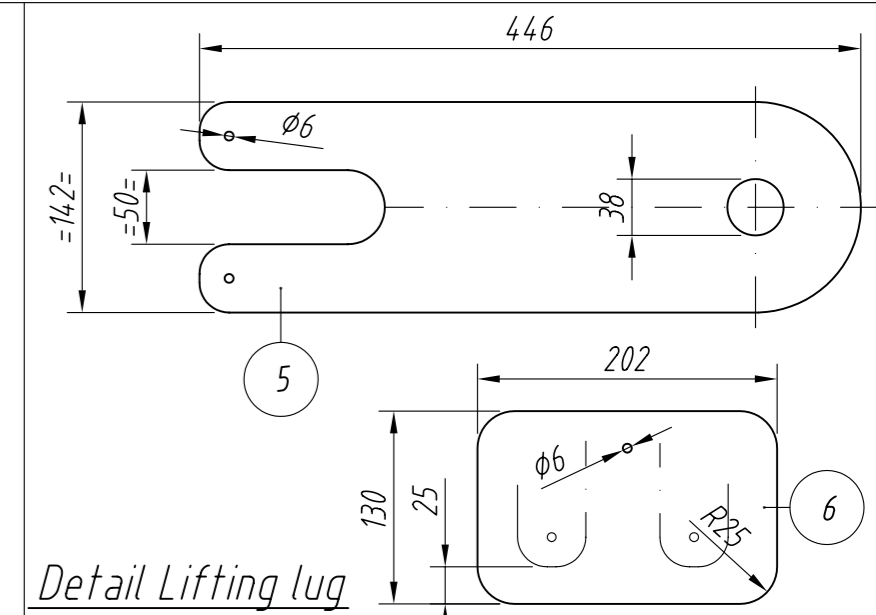
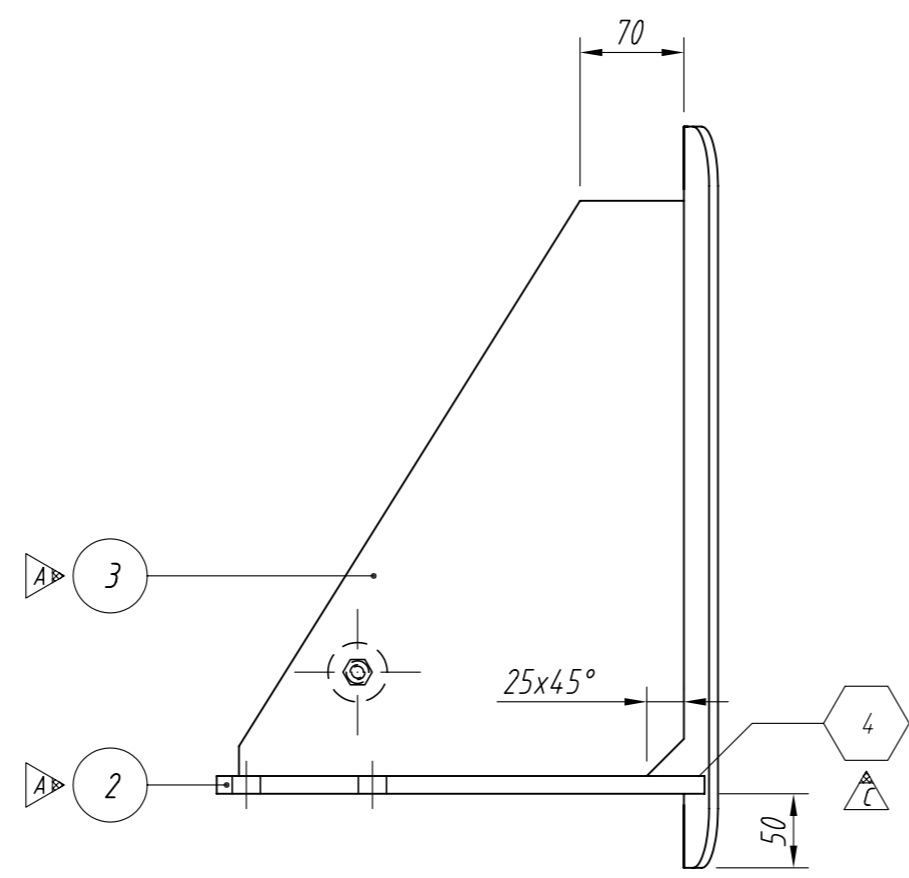
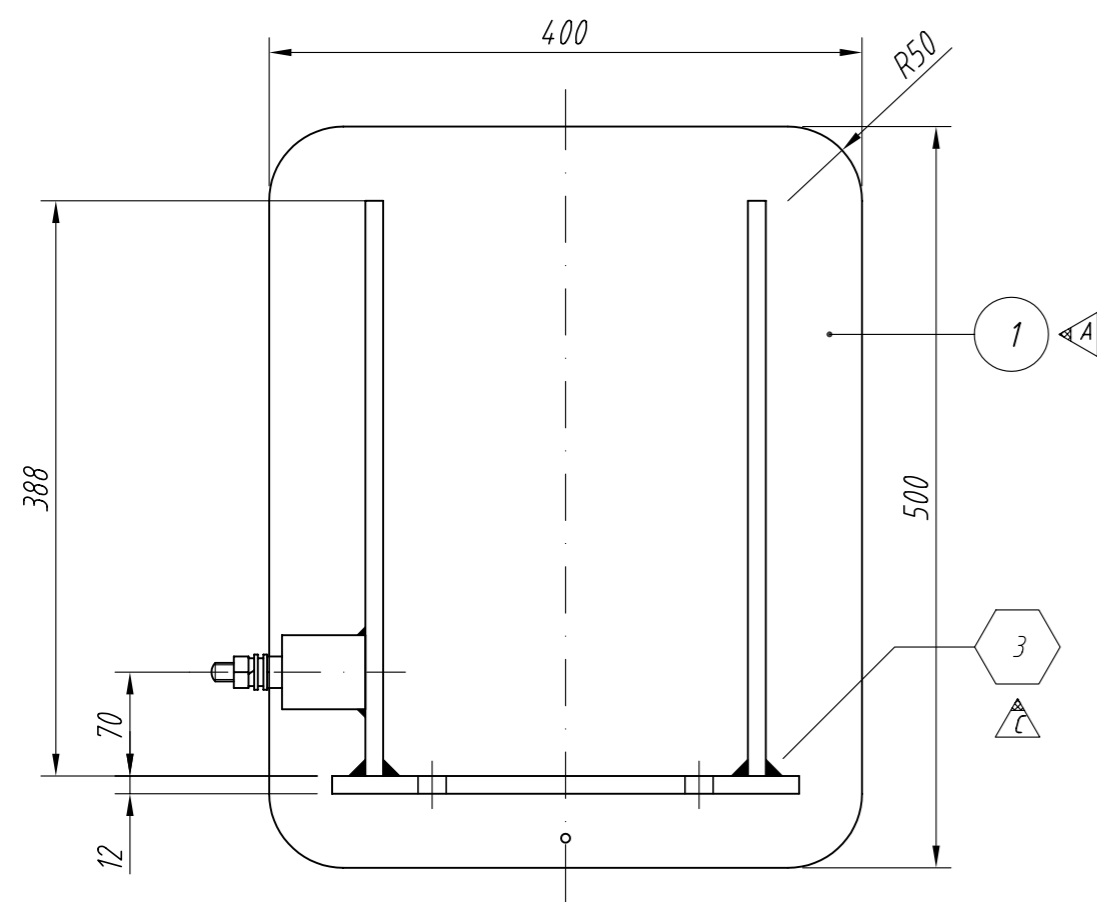
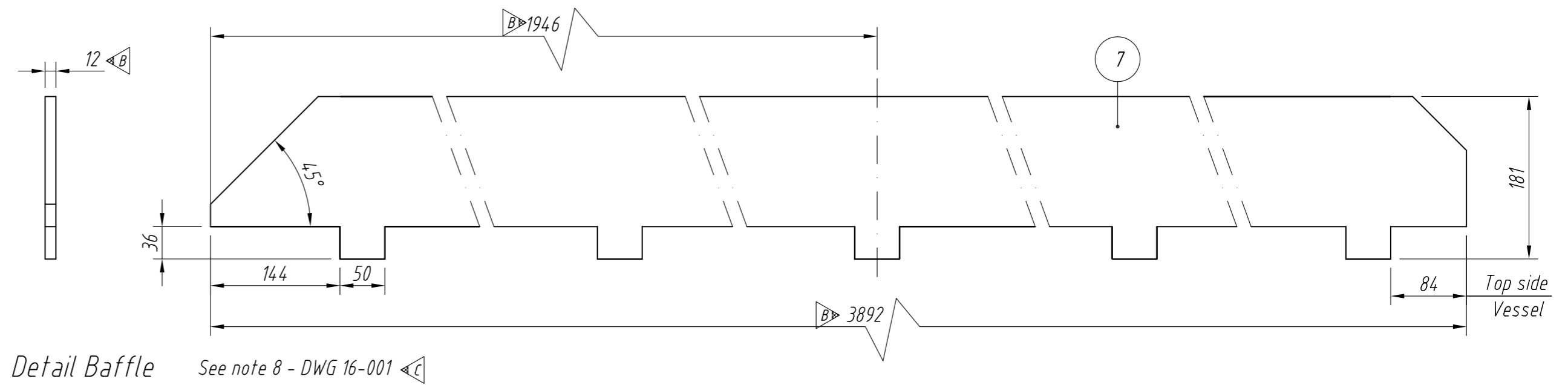
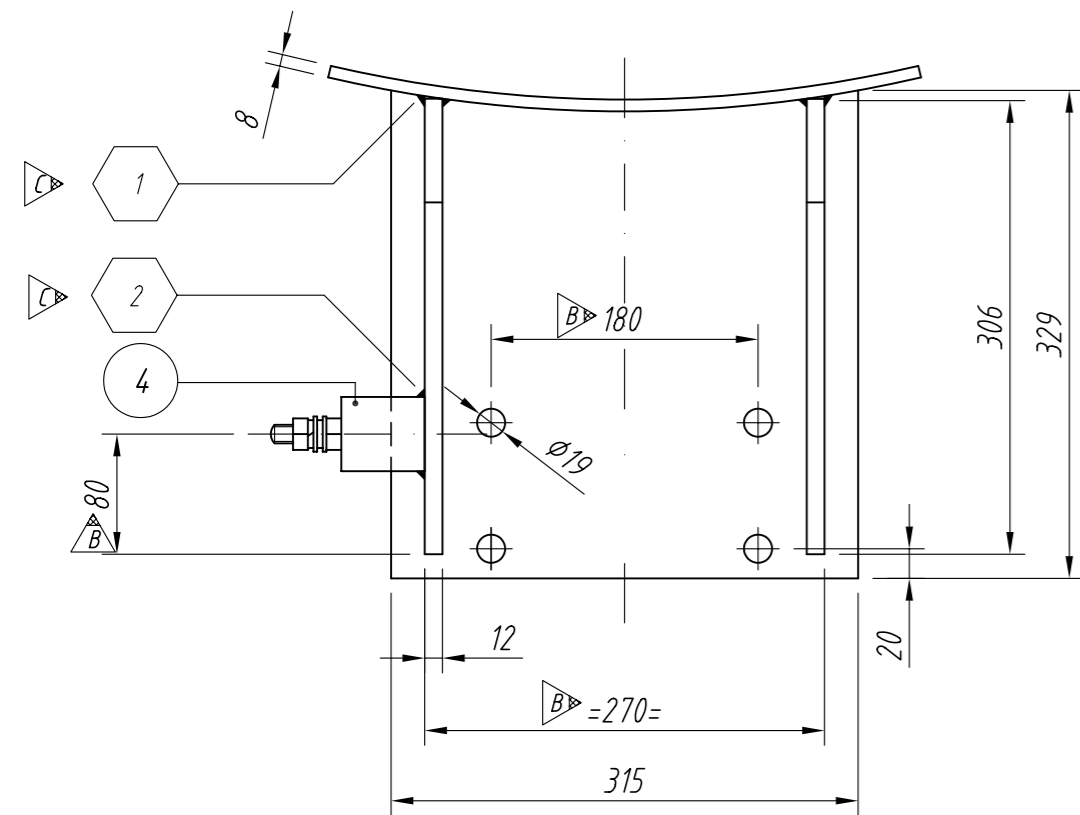


Detail Welding pitch



REV	POS	NUM	DESCRIPTION / DIMENSION	MATERIAL	CERT.
C 6	2		Halfcoil 60.3x2.77 L-232	A312TP316L	3.1
C 5	4		Plate 3 55x27	A240 316L	3.1
C 4	1		Dimple plate 15 5455x1200	A240 316L	3.1
C 3	1		Dimple plate 15 5455x734	A240 316L	3.1
C 2	1		Dimple plate 15 5455x870	A240 316L	3.1

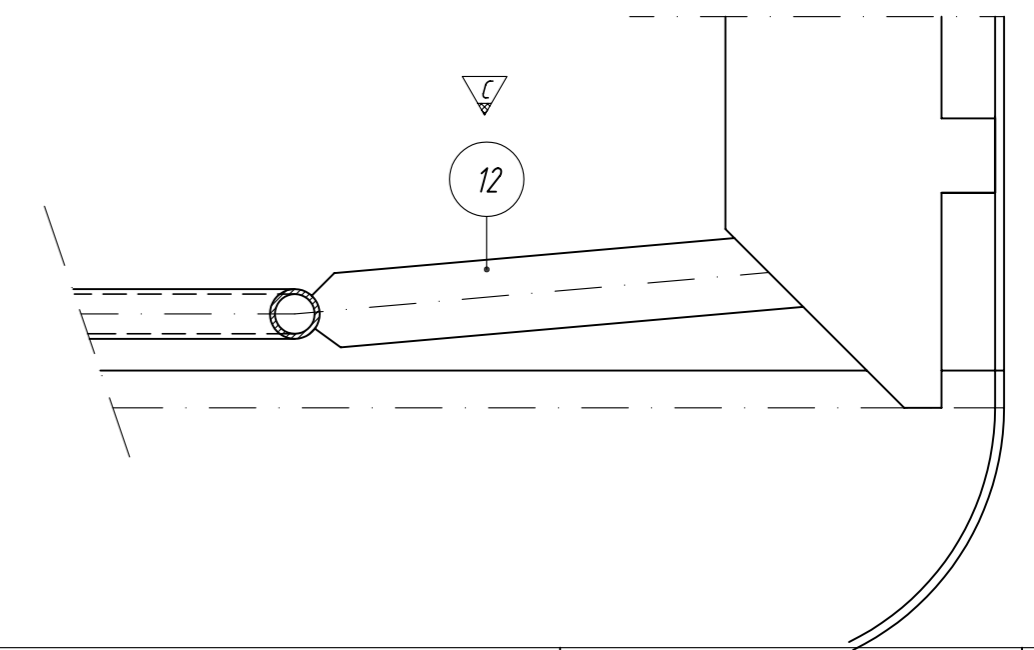
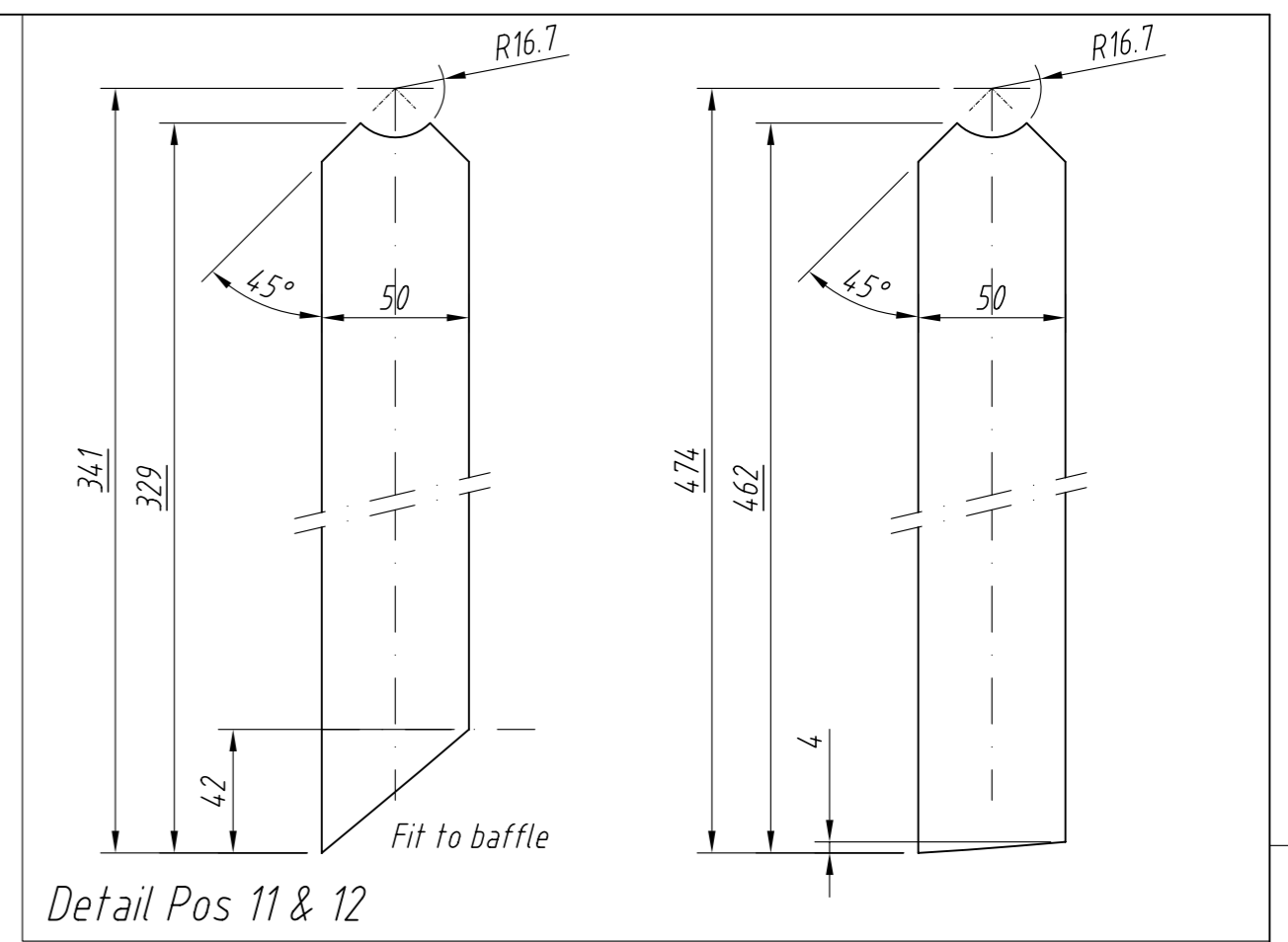
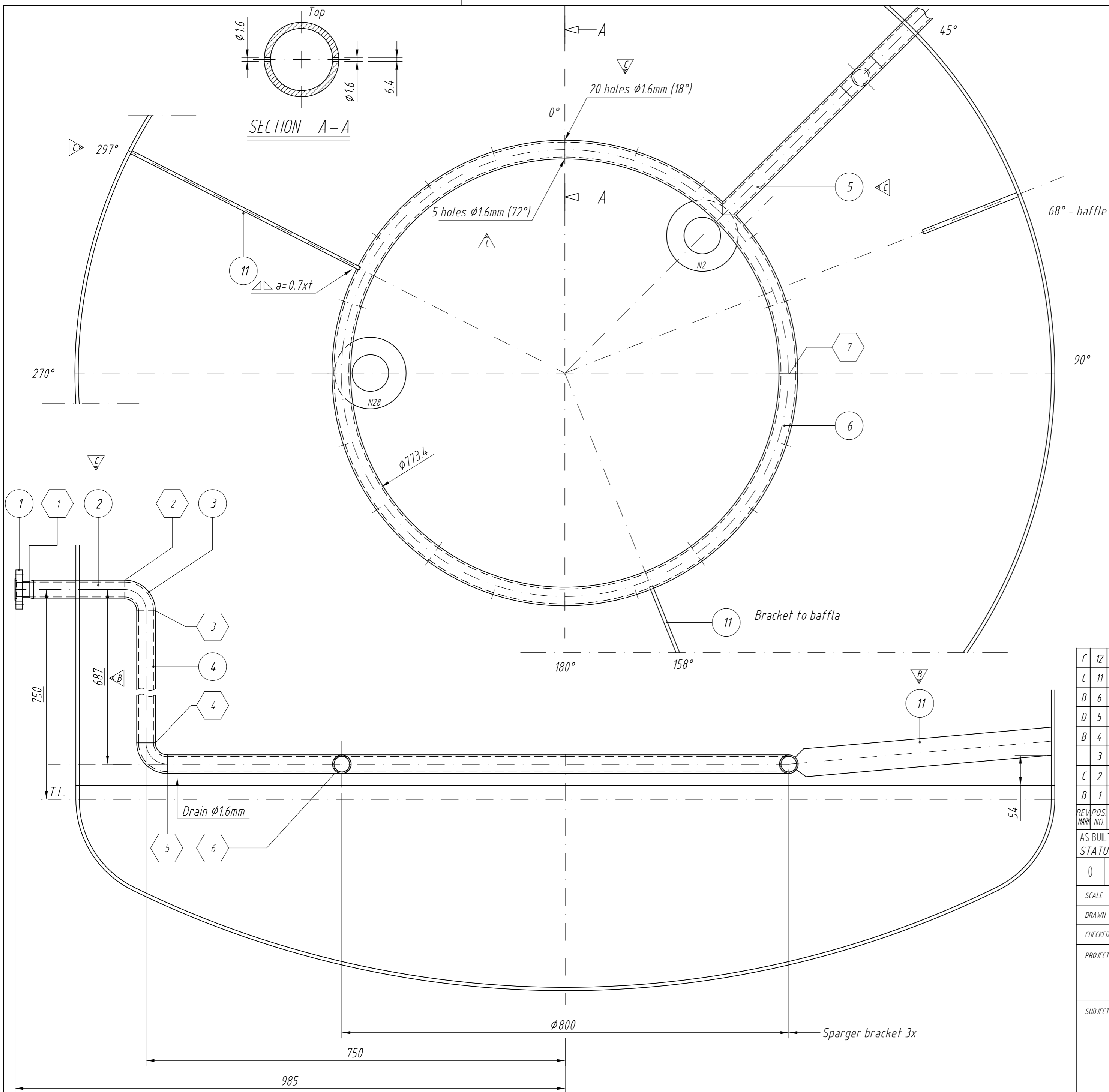
AS BUILT STATUS FIB	AS BUILT STATUS CLIENT	AS BUILT STATUS INSP. AUTHORITY
E	F	G
DATE: 26-07-2010		
SCALE: 1:15		
DRAWN: R van Leeningen		
CHECKED: G. Bijker		
PROJECT: GEA Process Engineering Nederland BV		
SUBJECT: Large Fermentor YA - V401		
Dimpleplate		
FORM: A1		
SHEET NO: 16-002		



REV	POS	NUMB	DESCRIPTION / DIMENSION	MATERIAL	CERT.
B	14	1	Plate 12 248x315	A240 304L	-
C	13	6	Washer M16 DIN125A	A4	-
C	12	6	Nut M16 DIN934	A4 DIN267	-
C	11	6	Bolt M16x50 DIN933	A4-70 DIN267	-
C	10	1	Plate 6 400x330	A240 316L	3.1
C	9	2	Plate 12 40x230	A240 304L	-
D	8	2	Plate 12 276x230	A240 304L	-
C	7	4	Plate 12 3892x181	A240 316L	3.1
B	6	2	Plate 6 202x130	A240 316L	3.1
	5	2	Plate 15 446x142	A240 304L	-
	4	2	Earthingboss	SS / brass	-
B	3	6	Plate 12 329x388	A240 304L	3.1
B	2	3	Plate 12 329x315	A240 304L	3.1
B	1	3	Plate 8 500x402	A240 316L	3.1

REV	POS	NUMB	DESCRIPTION / DIMENSION	MATERIAL	CERT.		
AS BUILT	STATUS FIB			AS BUILT	STATUS CLIENT	AS BUILT	STATUS INSP. AUTHORITY
0	A	B	C	D	E	20-01-2010	
SCALE	1,5	DATE	03-06-2009	REMARKS	-		
DRAWN	K vd Haring		03-06-2009	-	-		
CHECKED	G. Bijker		20-01-2010	-	-		
PROJECT	GEA Process Engineering Nederland BV BP - ZA 7038 - D15134						
SUBJECT	Large Fermentor YA - V401 Bracket / lug						
FORM				A2	REG. NO. -		
SHEET NO.				16-004	DRAWING NO. 730311		

EINSTEINWEG 18 POSTBUS 314 TEL. 058 294 59 45 www.fib.nl
8912 AP LEEUWARDEN 8901 BC LEEUWARDEN FAX 058 212 57 42 engineering@fib.nl



REV	POS	NUMB	REQ.	DESCRIPTION / DIMENSION	MATERIAL	CERT.
C	12	1		Plate 6 329x50	A240 316L	3.1
C	11	1		Plate 6 462x50	A240 316L	3.1
B	6	1		Pipe Seamless D=33.4x2.77 L=2515	A312TP316L	3.1
D	5	1		Pipe Welded D=33.4x3.38 L=312	A312TP316L	3.1
B	4	1		Pipe Welded D=33.4x3.38 L=611	A312TP316L	3.1
	3	2		Elbow D=33.4x3.38 90Gr. LR	A403WP316L	3.1
C	2	1		Pipe Welded D=33.4x3.38 L=171	A312TP316L	3.1
B	1	1		Aseptic Flange DN25 DIN 11864-2 GEA Supply	A182F316L	3.1

AS BUILT STATUS FIB		AS BUILT STATUS CLIENT			AS BUILT STATUS INSP. AUTHORITY		
0		A	B	C	D	E	20-01-2010
SCALE	1:5	DATE	17-08-2009				
DRAWN	A. Hoekstra	REMARKS	-				
CHECKED	G. Bijker	DATE	20-01-2010				
PROJECT	GEA Process Engineering Nederland BV BP - ZA 7038 - D15134						
SUBJECT	Large Fermentor YA - V401 Solvent Sparger						
FORM		REG. NO.		ITEM NO.		REVISED	
A2		-		-		AH, 31-08-2009, see rev. marks. AH, 21-10-2009, see rev. marks. AH, 16-11-2009, see rev. marks. AH, 20-01-2010, see rev. marks.	
SHEET NO.		DRWG. NO.		FORM		REG. NO.	
16-005		730311		A2		-	