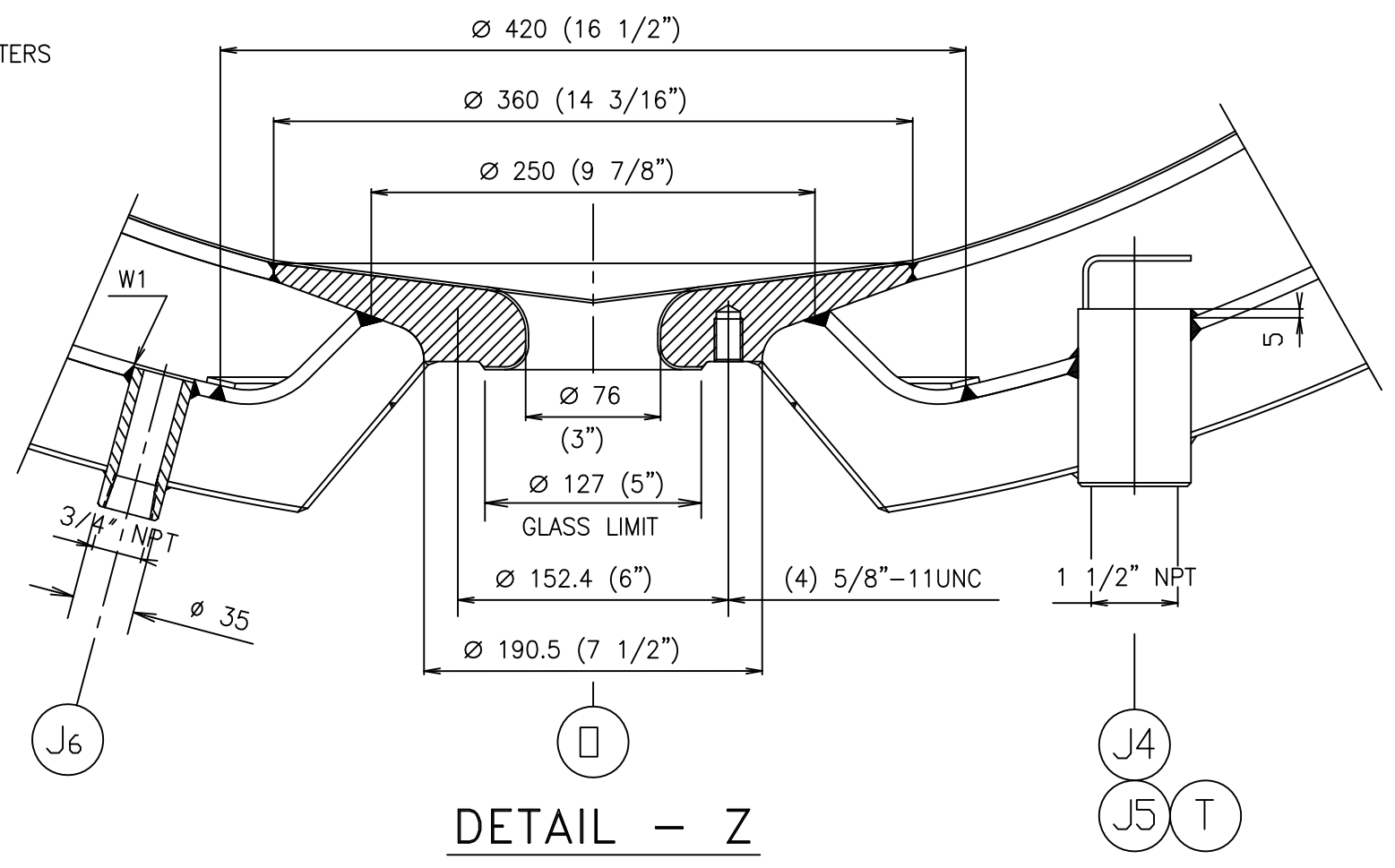
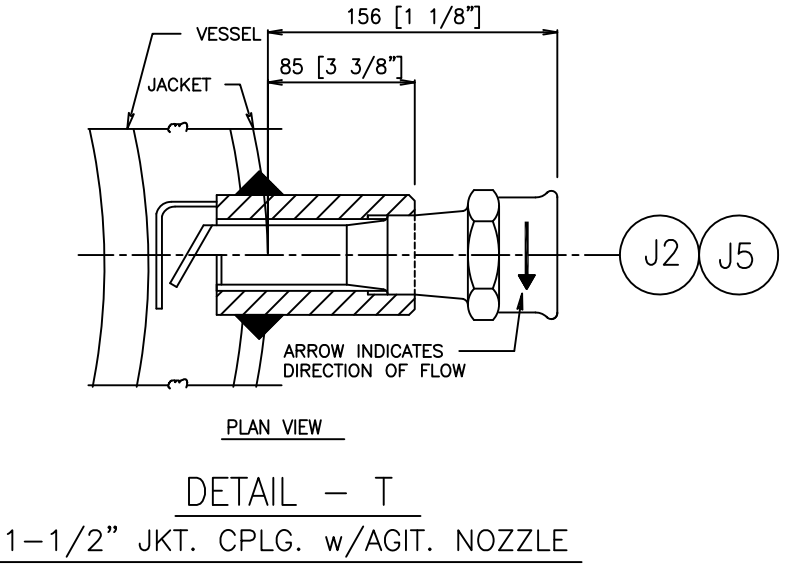


ELEVATION VIEW
SCALE: 1/2" = 1' 0"

NOTE:
THE JACKET AGITATING NOZZLES MUST BE ORIENTATED
SO THAT THE INLET FLOW WILL BE CIRCULAR AROUND
THE VESSEL.



DETAIL - Z

NOZZLE SCHEDULE				
MARK	SIZE	RATING	SERVICE	ACCESSORIES
A	8"	ANSI 150	ACCESS	W. BLIND FLANGE
P	6"	ANSI 150	MANWAY/ CIP SPRAYBALL	W. STAINLESS STEEL COVER AND CIP SPRAYBALL
N2	2"	ANSI 150	NITROGEN SPARGING	FIG. TO FERRULE ADAPTER 2" X 1 1/2"
RD	2"	ANSI 150	THERMOWELL	FIG. TO FERRULE ADAPTER 2" X 1 1/2"
VF	2"	ANSI 150	VENT/ RUPTURE DISK	FIG. TO FERRULE ADAPTER 2" X 2"
O	3"	ANSI 150	PADDED OUTLET	W. ITT SANITARY VALVE
J1	1 1/2"	3000#	JACKET CPLG.	W.P.LUG
J2	1 1/2"	3000#	JACKET CPLG.	W. AGIT. NOZZLE
J3	1 1/2"	3000#	JACKET VENT	W.P.LUG
J4	1 1/2"	3000#	JACKET CPLG.	W.P.LUG
J5	1 1/2"	3000#	JACKET CPLG.	W. AGIT. NOZZLE
J6	3/4"	3000#	JACKET DRAIN	W.P.LUG

ACCESSORIES				
MARK	QTY.	SIZE	DESCRIPTION	PART/DWG. NO.
A1	1	8"	8"-150# GLASS LINED BLIND FLANGE	BF1663

SPECIFICATIONS				
DESIGN	VESSEL	JACKET		
TOTAL CAPACITY	155 US GAL	36 US GAL		
DESIGN PRESSURE	586 LITERS	136 LITERS		
DESIGN TEMPERATURE	400 °F	400 °F		
TEST PRESSURE	204 °C	204 °C		
M.D.M.T.	3.6 BARS	130 PSIG		
AT PRESSURE	-20 °F	9 BARS		
CORROSION ALLOWANCE	40 PSIG/F.V.	100 PSIG		
RADIOGRAPH	NONE	NONE		
HEAT TREATMENT	SPOT	SPOT		
ASME CODE STAMPED & NAT'L. RD. REGISTERED	YES	NO		
WEIGHTS				
VOLUME per 1" st. side	3.45 GALS.			
VOLUME -BTM HEAD	19.5 GALS.			
WEIGHT EMPTY w/ access.	1,850 LBS.			
WEIGHT FLOODED W/H2O	3,500 LBS.			

SPECIAL FTJ-32-100 GALLON GLASS LINED STEEL REACTOR				
CUST.: WYETH-AYERST LABORATORIES/ESI				
LOCATION: CHERRY HILL, NJ				
CUST. P.O. NO. 4500247399/06				
VESSEL TAG NO. G-TANK 100-2-2				
AGITATOR TAG NO. N/A				
HOLD TANK				
SERIAL No.	NAME	DATE	QUANTITY:	(1) ONE
36532	MJ	11/20/01	S.O. NO.:	77061-002
	DS	12/14/01	S.A. NO.:	77061-GF
	DS	12/14/01	SCALE:	AS NOTED
DWG. NO.:				REV.
D77061-02				

- GENERAL NOTES**
- VESSEL DESIGNED AND FABRICATED IN ACCORDANCE WITH ASME CODE - SECTION VIII - DIVISION 1, 1998 EDITION AND 00 ADDENDA.
 - BOLT CIRCLES AND O.D. OF ALL SPLIT BACK UP FLANGES IN ACCORDANCE WITH ANSI B 16.5 - SERIES 150 LB. SPLIT FLANGES SUPPLIED FOR ALL NOZZLES. BOLT HOLES OF R.F. ANSI 150# SERIES TO STRADDLE VESSEL MAJOR CENTER LINES.
 - ALL COUPLINGS 3000 LB. NPT.
 - ALL DIMENSIONS ARE STEEL TO STEEL, AND ARE NOMINAL DUE TO HIGH TEMPERATURE FIRING.
 - FOR WELDING DETAILS AND GROOVE PREPARATION, SEE "WPS N. 1A THRU 19A AND 1B THRU 23B".
 - FOR FILLET WELDS, SEE MINIMUM WELDS SIZES INDICATED ON DRAWING.
 - VESSEL & COVERS GLASS LINING: **3009 BLUE**
 - GLASS ELECTROSTATIC TEST { 20,000 VOLTS AT FACTORY, 6,000 VOLTS IN FIELD.
 - PLUGS: **PLUG FREE**
 - JACKET HEATING AREA: TBD FL.
 - VESSEL PAINT: LEIGH'S EPIGRIP 984 - ZINC RICH EPOXY PRIMER
5 MILS DFT. COLOR: GRAY.
LEIGH'S RESISTEX C137 - HIGH PERFORMANCE URETHANE GLOSS
6 MILS DFT. COLOR: GRAY.
 - PHARMACEUTICAL U-CHANNEL GASKETS SUPPLIED FOR ALL NOZZLES. BOLTING SUPPLIED FOR OCCUPIED NOZZLES ONLY.
 - NAMEPLATE TO INCLUDE: EQUIPMENT I.D. TAG NO. & VESSEL NOMINAL VOLUME.
 - INSULATION & SHEATHING-INSWOL HP or CERWOL LT 2" THK. WITH 12 GA. 316L SS SHEATHING CONTINUOUSLY WELDED 180 GRIT FINISH. INSULATION TO BE CHLORINE FREE AND SUITABLE FOR AUSTENITIC STEEL.

- MATERIALS OF CONSTRUCTION**
- VESSEL - SHELL: SA-285 B
 - HEAD: SA-285 B
 - JACKET - SHELL: SA-285 B
 - HEAD: SA-285 B
 - SEALER RING: SA-285 B
 - DIAPHRAGM: SA-285 B
 - COUPLINGS: SA-240 316L SS
 - LEG COUPLINGS: SA-240 316L SS
 - PIPE LEGS: SA-240 316L SS
 - COVER HEAD: SA - 285 B
 - BLIND FLANGES: SA - 105
 - NOZZLES: SA - 181 CL.60
 - MAIN BODY FLANGES: SA - 181 CL.60
 - CLAMP FLANGES: SA - 181 CL.60
 - BACK UP FLANGES: SA - 105
 - NAMEPLATE: 304 S.S.
 - NAMEPLATE BRACKET (TOP): SA-285 B
 - NAMEPLATE BRACKET (BTM): 316L SS
 - BOLTS: SA - 193 - 8MM
 - NUTS: SA - 194 - 8MM
- GLASS NO. **3009** - HIGHLY ACID / ALKALI / THERMAL SHOCK / IMPACT / ABRASION RESISTANT
40-90 MILS THICKNESS (SEE GENL. NOTES 7 & 8)
- GASKETS { AFII - PTFE U-CHANNEL ENVELOPE TYPE WITH COMPRESSIBLE / CORRUGATED S.S. INSERT. WITH KEVLAR BASED FILLER MATERIAL.

REV.	DESCRIPTION	ENGR.	DATE	BY
1	ADDED BLIND FLANGE AT "A1". DWG. CREATED FROM D-77061-01; ISSUED CERTIFIED FINAL.			MJ

NOTICE: THIS DRAWING AND EVERY ATTACHMENT THERE TO AND ALL DATA AND INFORMATION CONTAINED THEREIN ARE EXCLUSIVE PROPERTY OF DE DIETRICH (USA), INC. THIS PROPERTY SHALL BE UTILIZED SOLELY BY THE CUSTOMER NAMED HEREIN OR FOR WHOM THE PROPERTY WAS PREPARED AND SHALL BE HELD CONFIDENTIAL AND SHALL NOT BE DISCLOSED TO ANY OTHER PERSON WHATSOEVER WITHOUT THE WRITTEN CONSENT OF De Dietrich (USA), INC. NEITHER THIS DRAWING, NOR THE ATTACHMENTS THERE TO, MAY BE REPRODUCED IN WHOLE OR IN PART WITHOUT THE WRITTEN CONSENT OF De Dietrich (USA), INC. AND, WHEN SO PRODUCED WITH SUCH CONSENT, SHALL, IN ANY EVENT, INCLUDE THIS ENTIRE NOTICE.

