

Design Code: Stoomvezel

General Data		Units
Description	Vessel	bar/°C
Design Pressure	15	MPa
Design Temperature	170	°C
Working Pressure	11.0	MPa
Working Temperature	170	°C
Test Pressure Hydr./Pneum.	19.5 / 11.5	bar/°C
Test Temperature Min.		°C
Norm. Vec. Conditions		MPa
Contents		
Total Weight Empty	~450	Kg
Total Weight Full of Water		Mt
Height Operating		Mt
Corrosion Allowance		mm
Hazard Category		MPa
M.A.W.P.		MPa
Limiting Part		
Inspection by		
Heat Treatment		
N.D.T. Examination		
Dir. of Roundness Max.		%
Insulation		mm
Impact Test Item -5°C		%
Joint Efficiency Shell/Head		%

Weld Methods
Material
Finishing
Material According to

Atosta 304 s en 4mm van Switveld
lassen gebelst en geheel gepassiveerd
DIN 17740

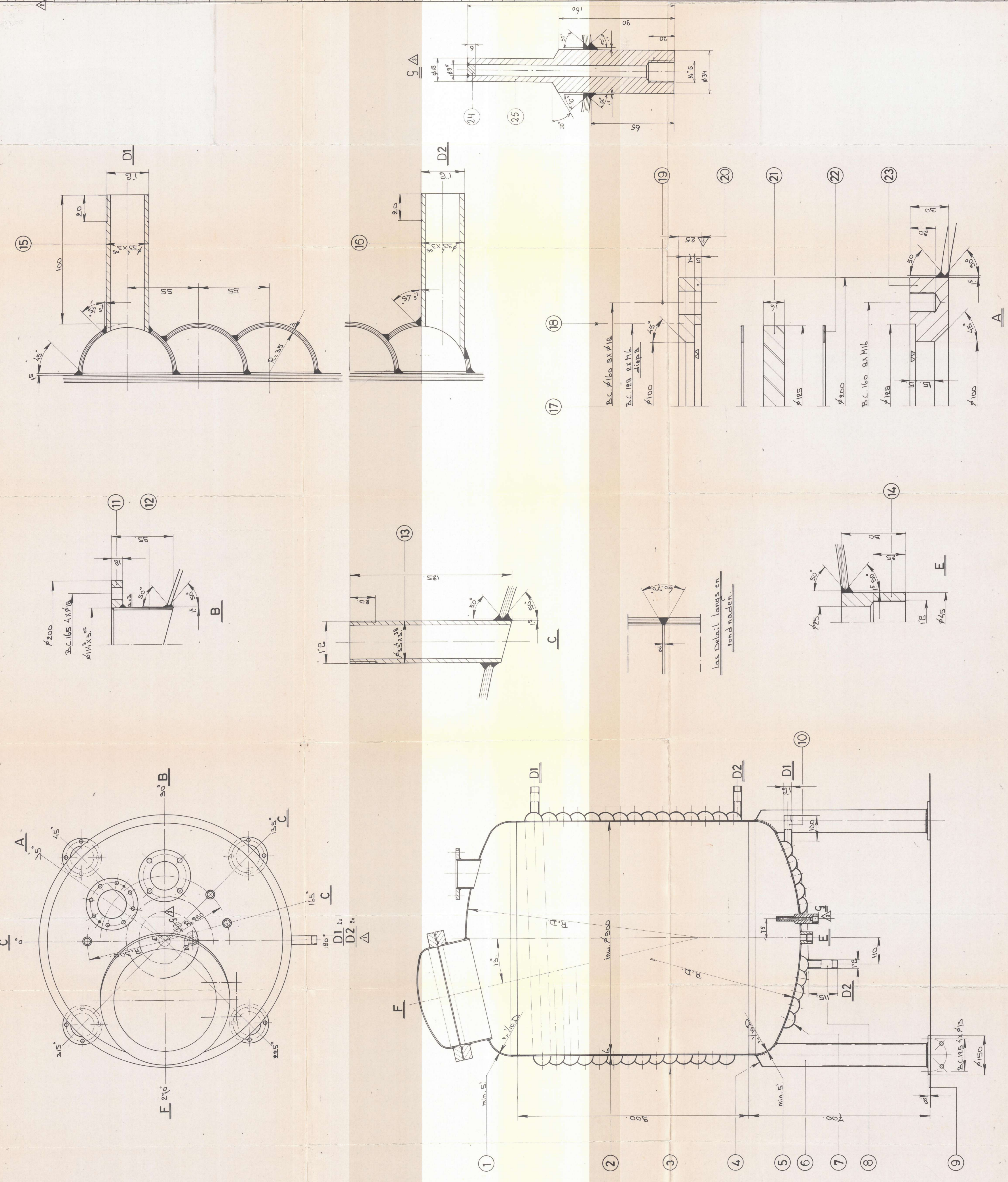
Additional Drawings and Specifications
Drawing No. / Spec. No.
Description
Mantel + Hoofp.

Rev.	Date	Description	Approver	Date
0	17.4.84	New Drawing		17.4.84
1	27.4.84	1/2rpl. shells D1 + D2		27.4.84
2	7-5-84	DOS NR. 20 - TEGENWAARDE 25 MM		7-5-84
3	8.8.84	NOZZEL G		8.8.84

Purch. Order No.
Item No.
Pkg. Name
Pkg. Location

546
Gist. Broekmans Heppel
Nozzle D1/D2

Mark	Numb.	Service	Normdia	Rate	Flange	Remarks
A	1	Kijk/Lichtglas	400			
B	1	Fibernet	100			
C	1		100			
D	1		100			
E	1	uitlaat	100			
F	1	Mantel	400			
G	1	PT 100				



Item	Quant.	Description	Dim/Type	Material	Remark/Cont.
1	1	uitlaat			
2	1	Mantel			
3	1	PT 100			
4	1	Kijk/Lichtglas			
5	1	Fibernet			
6	1				
7	1				
8	1				
9	1				

Order No. 4846552
SRI B.V. SPECIAL INDUSTRIAL INDUSTRIE
PARK EN APPARATEBOUW
VEENHOUTEN

Productie ketel

Order No. 3444 To.0